

RIVA 75' VENERE #18 "Ola"



RIVA 75' VENERE #18 "Ola"



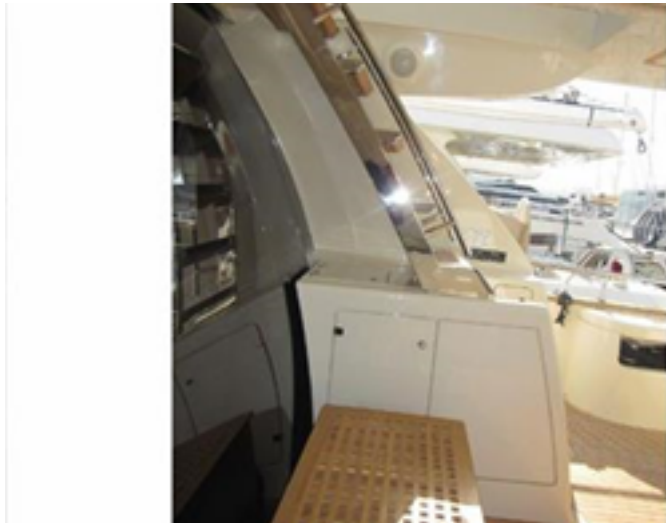
RIVA 75' VENERE #18 "Ola"

EXTERNAL



RIVA 75' VENERE #18 "Ola"

EXTERNAL



RIVA 75' VENERE #18 "Ola"

EXTERNAL



RIVA 75' VENERE #18 "Ola"

EXTERNAL



RIVA 75' VENERE #18 "Ola"

INTERNAL



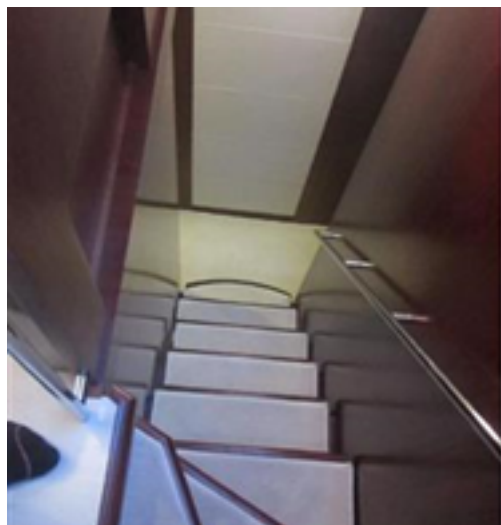
RIVA 75' VENERE #18 "Ola"

INTERNAL



RIVA 75' VENERE #18 "Ola"

INTERNAL



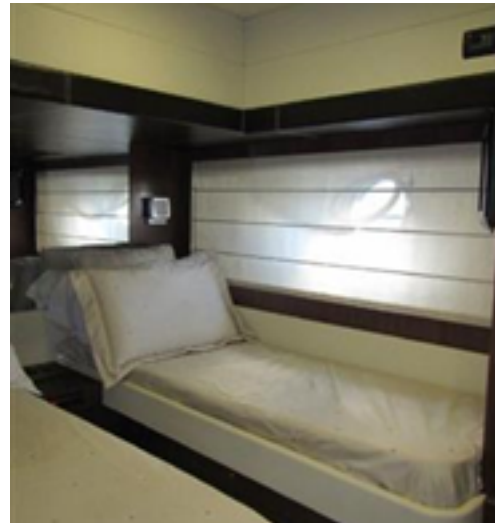
RIVA 75' VENERE #18 "Ola"

INTERNAL



RIVA 75' VENERE #18 "Ola"

INTERNAL



RIVA 75' VENERE #18 "Ola"

INTERNAL



RIVA 75' VENERE #18 "Ola"

Main features

Builder	RIVA
Model	75' VENERE
Hull number	18
Type	Flybridge
Hull Type	Planing
Boat name	Ola
Year	2008
Architect	Officina Italiana Design
Hull colour	Metallic Black Night hull with Riva Cream deck
Interna woods	Matt finished Walnut
Construction material	Fiberglass - VTR
LOA	23.00 [m] - 75.46 [ft]
Beam	5.72 [m] - 18.77 [ft]
Draft	1.86 [m] - 6.10 [ft]
Engines	MTU 10V 2000 M93 POWER 1524 mhp
Cruising speed	29 [kn]
Max speed	32 [kn]
N° guest cabin	4
N° crew cabin	2
N. toilets	4

RIVA 75' VENERE #18 "Ola"

Main features

Displacement	50,900 [kg]
On display at/in	Vilamoura
Country	Portugal
Flag	Portugal
Asking Price	1,450,000 [euro] paid
VAT status	

Technical information

Engines hours	1300
Trasmissions	Shaft Drive
Propellers	NIBRAL
Main generator	50 Hz 23 kw 220V
Second generator	Kohler 50 Hz 16 kw
Fuel tank	220V Kohler 5500 lt
Water tank	1000 lt
Charge batteries	Yes

Technical information

Inverter

Yes

RIVA 75' VENERE #18 "Ola"

Description per area

Layout

The flybridge of the new 75' Venere- specifically designed to offer guests the utmost comfort thanks to a comfy sofa sitting up to six people - is completed by an elegant, slender hard top resulting in incredible versatility and liability.

The Venere 75' is a boat designed for people who love living the sea in an intensive way. Internal and external spaces have been

designed to grant the maximum comfort during the mid-long range cruises.

The aft door allows obtaining a large swimming platform, perfect to relax and practice sea sports.

On the lower deck, the wide hull glazing offers an unusual view just at the sea level, letting through plenty of light into the three guest cabins and the full-beam master

stateroom, which fitted with an office area, a vanity and a walk-in wardrobe.

Every cabin has direct access to its en-suite head; the guest cabins are furnished with twin beds that can be replaced by a French bed.

The Venere features a full custom aft deck sunbed that can accommodate up to 6 people and an external 50" TV.

Exterior

The Yacht features a full custom aft deck

sunbed that can accommodate 6 persons

and a 50" exterior TV.

Mechanicals

The MTU 10V 2000 M93

RIVA 75' VENERE #18 "Ola"

Optional list

Optional list

Atlas Frequency converter for Europe / US / anchored
Worldwide shore power SEARECOVERY water maker
ARG Stabilizer keeps the ship stable when Underwater lights

Bow and stern thrusters
Raymarine and MapTech electronics

Tender (model and LOA) and engine (model and power)

Nautica Nano Tender 14 feet with 50hp Yamaha

