

## 2017 FERRETTI YACHTS 550 – M/Y BE ONE



### MAIN YACHT CHARACTERISTICS:

<b>Boat Name:</b>	BE ONE	<b>Year:</b>	2017
<b>Builder/Make:</b>	Ferretti Yachts	<b>Model:</b>	550
<b>Hull Number:</b>	23	<b>Type:</b>	Motor Yacht
<b>Length Overall:</b>	56ft 2in 17.12m	<b>Beam:</b>	15ft 10in 4.82m
		<b>Draft:</b>	4ft 11in 1.51m
<b>Engine Make/Model:</b>	2x MAN i6 800CR	<b>Engine horsepower:</b>	2x 800hp
<b>Propulsion Type:</b>	Shaft Drive	<b>Fuel Type:</b>	Diesel
<b>Cruising Speed:</b>	28 knots	<b>Max Speed:</b>	30 knots
<b>Engine Hours:</b>	616	<b>Range:</b>	300 nautical miles
<b>Guest Cabins:</b>	3	<b>Crew Cabins:</b>	1
<b>Total Guests:</b>	6	<b>Total Crew:</b>	1
<b>Total Guest Toilets:</b>	3	<b>Crew Toilets:</b>	1
<b>On Display:</b>	Mallorca	<b>Country:</b>	Spain
<b>Flag:</b>	Malta	<b>Private/Commercial:</b>	Commercial
<b>Asking Price:</b>	€ 990,000	<b>Tax Status:</b>	VAT Not Paid

#### Disclaimer:

Brokers present the particulars of this Vessel in good faith; however, they cannot guarantee or warrant the accuracy of this information, nor do they provide any assurances regarding the Vessel's condition. Images of the Vessel may be sourced from a catalogue. This document shall not, under any circumstances, be deemed a contractual term.

## 2017 FERRETTI YACHTS 550 – M/Y BE ONE

### TECHNICAL CHARACTERISTICS:

<b>RCD / CE Category:</b>	A - Ocean	<b>Classifying Body:</b>	RINA
<b>Main Generator:</b>	ONAN 17.5 kW	<b>2nd Generator:</b>	/
<b>Hours:</b>	N/A	<b>Hours:</b>	/
<b>Fuel Tank:</b>	2500 lt 661 gal	<b>Water Tank:</b>	680 lt 180 gal
<b>Black Tank:</b>	300 lt 79 gal	<b>Grey Tank:</b>	350 lt 92 gal
<b>Stabilisers:</b>	Seakeeper Gyro (2019)	<b>Bow thruster:</b>	Electric 10.7hp
<b>Stern thruster:</b>	Electric 8hp	<b>Air conditioning:</b>	Yes

### YACHT DESCRIPTION:

<b>Architect:</b>	Studio Zuccon International Project	<b>Material:</b>	GRP
<b>Internal Furniture:</b>	Walnut Veneer	<b>External Hull Colour:</b>	White

The Ferretti Yachts 550 M/Y BE ONE combines elegance with a sporty character, enhanced by sophisticated style choices whilst her uninterrupted main deck glazing 'cuts' the yacht's profile, emphasising her dynamic look. M/Y BE ONE offers 3 en-suite cabins, with a full beam master and the most sophisticated expressions of "Made in Italy" quality. M/Y BE ONE is now Maltese Commercially Coded, albeit never chartered.

### LAYOUT:

The layout of M/Y BE ONE is thoughtfully arranged to maximise space, comfort and privacy. The main deck benefits from expansive glazing, creating a bright saloon that flows naturally from the aft cockpit and connects seamlessly to the dining area and helm. Below deck, three well-appointed en-suite cabins include a generous full-beam master amidships, complemented by forward VIP and twin guest accommodation.

### BROKER COMMENTS:

M/Y BE ONE is a yacht that makes ownership straightforward. Easy to operate, exceptionally spacious and presented in excellent condition, she is ready to be enjoyed immediately and offers genuine value in her size range.

#### Disclaimer:

Brokers present the particulars of this Vessel in good faith; however, they cannot guarantee or warrant the accuracy of this information, nor do they provide any assurances regarding the Vessel's condition. Images of the Vessel may be sourced from a catalogue. This document shall not, under any circumstances, be deemed a contractual term.

# 2017 FERRETTI YACHTS 550 – M/Y BE ONE

## SPECIFICATION:

### EQUIPMENT:

#### General:

Silvertex exterior cushions  
Cushions with backrest for cockpit benches  
Covers for cockpit mooring stations

#### External:

Underwater lights  
Rope walkway lights  
Teak spoiler  
Teak access steps to side walkways  
Teak cockpit  
Stainless steel bimini top on flybridge with LED lighting  
Refrigerator on fly (42L)  
Ice maker with independent tank  
Openable natural teak cockpit table  
Cooking plate on flybridge  
Cockpit water tap  
Electro-hydraulic retractable gangway  
Electro-hydraulic dinghy lift

#### Internal:

Parquet main deck floor  
5kg washer/dryer  
Sofa in owner's cabin  
Additional bathroom dedicated to VIP cabin  
Handles on bathroom stairs  
Bluetooth module for owner's cabin radio  
Second refrigerator with freezer drawer  
40" TV in saloon with electric lift  
32" TV in owner's cabin

#### Technical:

Air conditioning (salon + cabins + crew)  
Seakeeper Gyro Stabilizer (2019)  
Racor filter for generator  
Smoke separator for generator  
Electric bow thruster 10.7 Hp (double propeller)  
Electric stern thruster 8 Hp (double propeller)  
Digital chain counter  
Electric windlass  
Preparation for watermaker installation  
Outside water intake  
Waste water system with tank

#### NAVIGATION:

Simrad NSS 12" and 9" Evo radar/plotter on flybridge  
2 x Simrad NSS 12" and 1 x 9" Evo on bridge  
Autopilot  
Radar antenna Simrad Broadband 4G  
VHF  
Third fixed control station with cover

#### AUDIO VISUAL:

Hi-Fi stereo FM/CD/DVD with cockpit and bow speakers

#### Disclaimer:

Brokers present the particulars of this Vessel in good faith; however, they cannot guarantee or warrant the accuracy of this information, nor do they provide any assurances regarding the Vessel's condition. Images of the Vessel may be sourced from a catalogue. This document shall not, under any circumstances, be deemed a contractual term.

## **2017 FERRETTI YACHTS 550 – M/Y BE ONE SPECIFICATION (continued):**

Satellite antenna rearrangement

### **DOMESTIC:**

Cabin access ladder night lights

### **TENDER(S) & TOYS:**

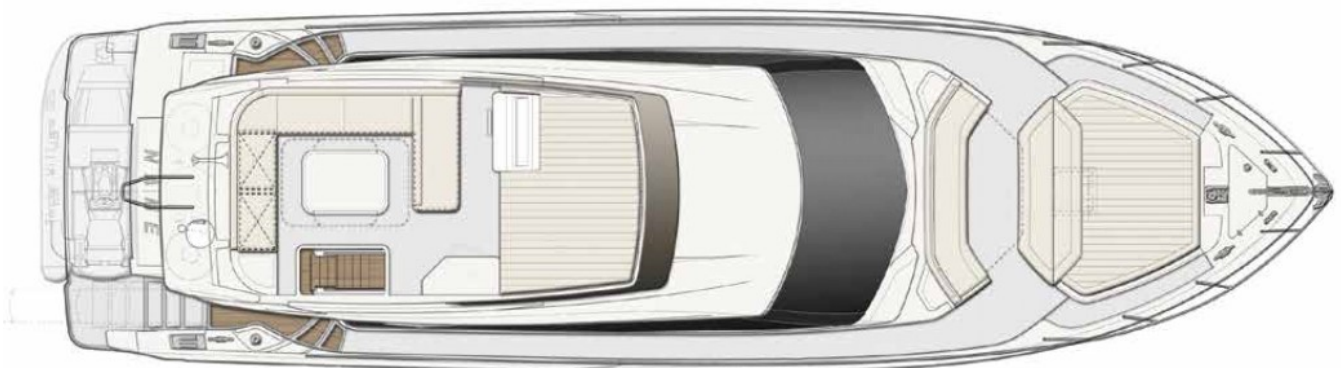
/

### **Disclaimer:**

Brokers present the particulars of this Vessel in good faith; however, they cannot guarantee or warrant the accuracy of this information, nor do they provide any assurances regarding the Vessel's condition. Images of the Vessel may be sourced from a catalogue. This document shall not, under any circumstances, be deemed a contractual term.

## 2017 FERRETTI YACHTS 550 – M/Y BE ONE

### LAYOUT:

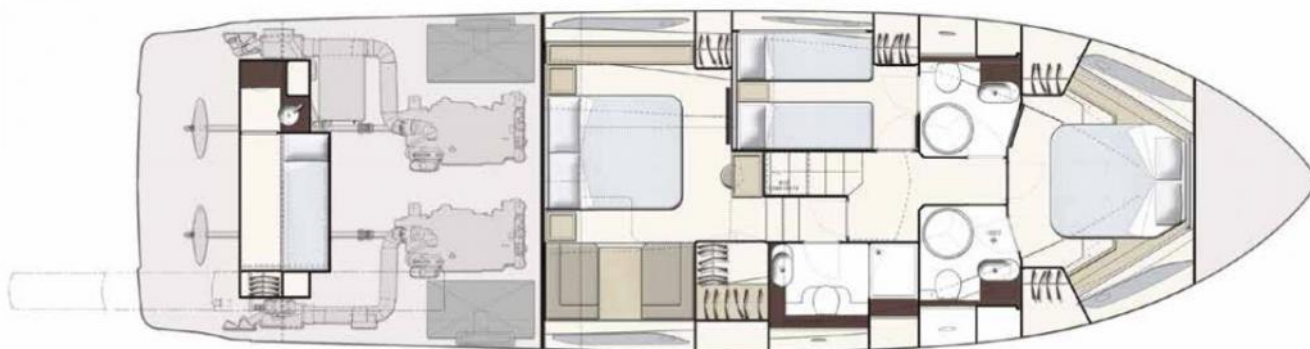


#### Disclaimer:

Brokers present the particulars of this Vessel in good faith; however, they cannot guarantee or warrant the accuracy of this information, nor do they provide any assurances regarding the Vessel's condition. Images of the Vessel may be sourced from a catalogue. This document shall not, under any circumstances, be deemed a contractual term.

## 2017 FERRETTI YACHTS 550 – M/Y BE ONE

### LAYOUT (continued):



#### Disclaimer:

Brokers present the particulars of this Vessel in good faith; however, they cannot guarantee or warrant the accuracy of this information, nor do they provide any assurances regarding the Vessel's condition. Images of the Vessel may be sourced from a catalogue. This document shall not, under any circumstances, be deemed a contractual term.