

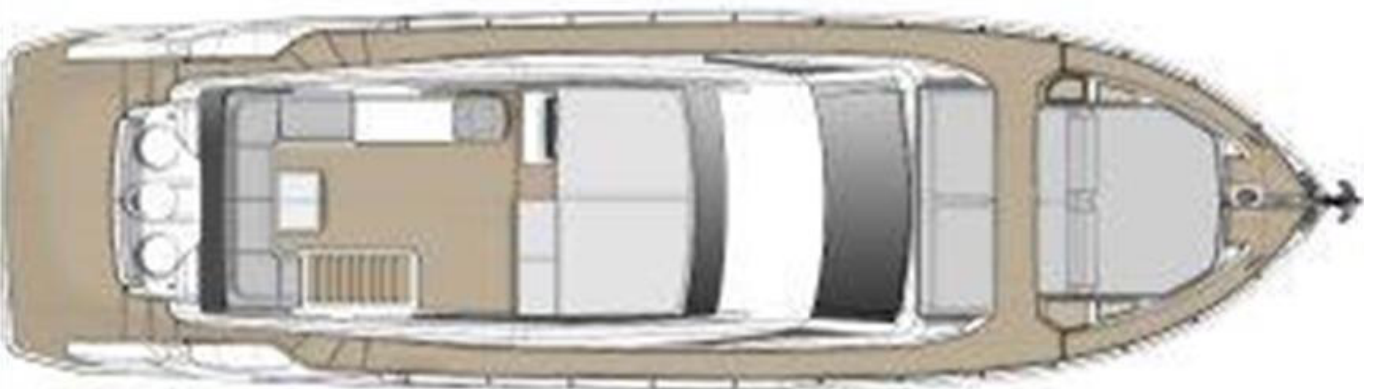
## 580 - FERRETTI YACHTS

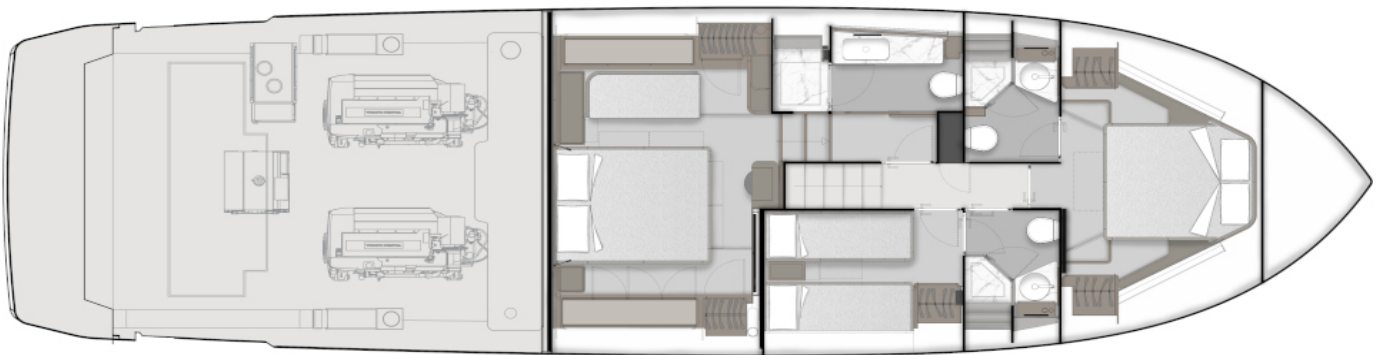
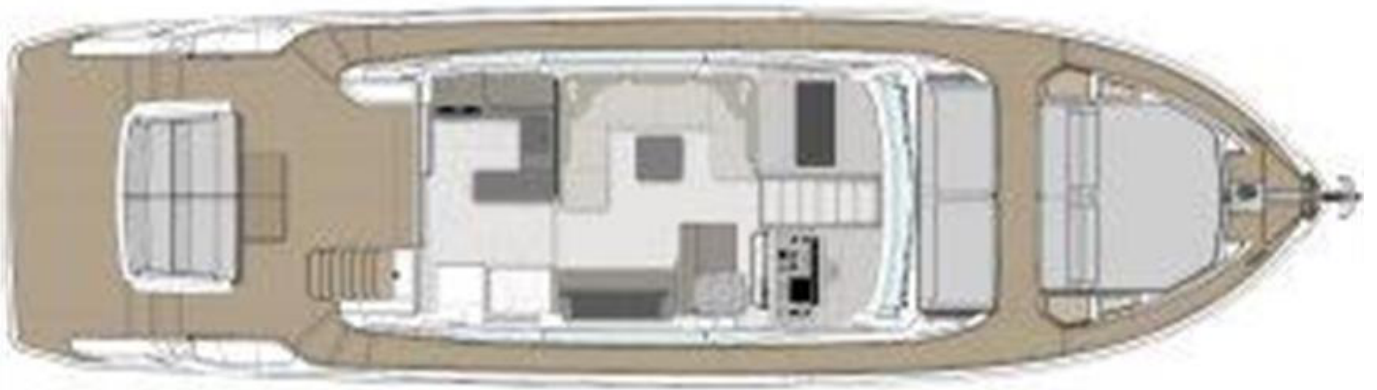
Hull number: 15 - year of built: 2024



### MAIN FEATURES

<b>BUILDER</b>	FERRETTI YACHTS	<b>MODEL</b>	580
<b>HULL NUMBER</b>	15	<b>TYPE</b>	Motor Yachts
<b>HULL TYPE</b>	Planing	<b>BOAT NAME</b>	no name
<b>YEAR</b>	2024	<b>CONSTRUCTION MATERIAL</b>	Fiberglass - VTR
<b>LOA</b>	18.24 [m] - 59.10 [ft]	<b>BEAM</b>	5 [m] - 16.5 [ft]
<b>DRAFT</b>	1.50 [m] - 4.11 [ft]	<b>ENGINES</b>	2x Volvo Penta D13 - 1000hp
<b>CRUISING SPEED</b>	26 [kn]	<b>MAX SPEED</b>	32 [kn]
<b>N° GUEST CABIN</b>	3	<b>N° CREW CABIN</b>	1
<b>N. TOILETS</b>	3	<b>ON DISPLAY AT/IN</b>	Italy
<b>COUNTRY</b>	Italy	<b>FLAG</b>	Unregistered
<b>ASKING PRICE</b>	0.00 [euro]	<b>VAT STATUS</b>	Not paid





## Technical information

---

Engines hours	0
Trasmissions	V Drive
Fuel tank	3250 lt
Water tank	700 lt

---

## Description per area

---

### General description

The ground breaking new Ferretti Yachts 580 at 18m (59ft) sets a high bar in many parameters, performance from smaller more efficient Volvo engines with the aft V-Drive power configuration gaining a massive amount of extra internal spaces and a faster more quiet ride in any sea state, always a few knots faster than the competition. Open plan vistas and oversized windows, open sightlines and an exceptional quality interior add up to a fitting addition to this world class yacht range. Scheduled to be delivered in May 2024 in Italy, adding a sense of exclusivity and anticipation for potential buyers.

## Optional list

---

Dishwasher for 10 people  
Refrigerator on the fly (50 liters)  
Icemaker in cockpit  
Teppanyaki  
Wine cooler  
Generator Upgrade  
Schuko plugs for all the boat  
Shore fresh water intake  
Additional plug in cockpit  
Anchor upgrade (50 kg and 120 mt chain)  
Flybridge co-pilot seat  
GRP cover for cockpit mooring stations  
Hand rails for swim ladder  
Hard Top  
Mooring winches - couple  
Primer application under the antifouling  
Teak on the lifting platform with grey caulking  
Teak on Flybridge with grey caulking  
Teak table on the fly (foldable)  
Teak with grey caulking for cockpit and steps  
Cover for exterior cushions and tables  
Winch 2300W at bow  
Third bathroom dedicated to the VIP cabin  
Mediterranean AC  
Air extractors in the bathrooms  
Crew cabin  
Electric blackout and curtains for the master cabin  
Electric curtains for the salon  
50" Mirror TV in the master cabin  
65" TV in salon  
AIS transponder SIMRAD NAIS500  
Digital chain counter on the fly  
Simrad autopilot control system  
SIMRAD display upgrade  
Stern thruster  
Gyro stabilizers  
Retractable gangway  
Lifting platform  
Induction cooking plate in the galley  
Wooden floor in the main deck (Cadorin oak)  
Additional socket in the galley (over the existing socket to the left)  
Master cabin sofa in Aurim top 608 and Rada Pratikio 401  
Galley top in Fenix Bronzo Doha

---

### Disclaimer

BROKERS offer the details of this vessel in good faith but cannot guarantee or warrant the accuracy of this information nor warrant the condition of the vessel. Pictures of the vessel have been taken from the catalogue. This document does not represent in any case a contractual term.