

MONTE CARLO YACHTS 76



“Cappuccino”

The Monte Carlo Yachts 76 M/Y CAPPUCCINO, built in 2013, is an elegant yacht, well maintained and in very good condition, that offers a balanced combination of comfort and practicality. Powered by MAN 2 x 1400 HP engines, this yacht delivers excellent performance, with smooth cruising and a reliable engine setup. The layout includes 4 double ensuite cabins, plus an additional crew cabin. In exceptionally fine condition, M/Y CAPPUCCINO has been carefully maintained. Currently lying in the South of Spain, the yacht is available for viewings, and a personal visit is recommended to fully appreciate its quality and features.

YEAR	:	2013
L.O.A.	:	22.35 m
BEAM	:	5.59 m
DRAFT	:	1.13 m
WEIGHT	:	tons
DIESEL	:	4,200 litres
WATER	:	1,000 litres
ENGINES	:	MAN D2862LE442 – 1400hp
HOURS	:	980 (October 2024)
FLAG	:	Poland
LYING	:	South of Spain
PRICE	:	€1,890,000 (VAT paid)

All particulars are believed to be correct, but not guaranteed.

MONTE CARLO YACHTS 76

LAYOUT:

Spacious exterior areas, including large flybridge with seating, sunbathing, and wetbar, excellent bow lounge area, and generous cockpit. Large hydraulic platform for launching a tender.

Open plan main deck encompassing a comfortable salon, open plan galley with seating area and folding table opposite, and the main helm position.

Accommodation for 8 guests in 4 cabins. Large main cabin covering the entire beam with the adjacent bathroom with separate shower with bench and toilet and bidet compartment. Large double bed, walk in wardrobe, storage and vanity desk. VIP cabin towards the bow, with double bed, storage and ensuite bathroom. Two further guest cabins, each with twin beds that can be joined to make doubles. Each with their own bathroom.

Another galley is located on the lower deck, joining the crew cabin with 2 beds in an L shape and separate bathroom. Access to engine room.

NAVIGATION:

- Xenta joystick control at main helm and flybridge
- Böning control and management touch screen
- MAN engine digital displays with repeaters on the flybridge
- Raymarine RAY 240E VHF radio with repeater on flybridge
- Chain counter
- Raymarine large screen with separate control panel
- 2 x Raymarine plotter screens on the flybridge
- Humphries trim control display with repeater on the flybridge
- Raymarine autopilot control with repeater on the flybridge
- Raymarine small navigation display with repeater on the flybridge
- Raymarine Super HD colour open array radar antenna
- EPIRB on flybridge

All particulars are believed to be correct, but not guaranteed.

MONTE CARLO YACHTS 76

EQUIPMENT:

- Carbon hard top with large opening on flybridge
- SeaKeeper gyroscopic stabilizers
- Kohler generators 20KVA (x2) (1000 and 1950 hours)
- Aquamatic watermaker
- Battery chargers and inverter
- Access to fuel tanks and visual fuel indicator in the crew area
- Electro-hydraulic gangway
- Electro-hydraulic swim platform
- Liferafts (x2 for 8 person each)
- Life ring with light
- Mooring winches at stern (2)
- Electrically operated leather Venetian blinds on the main deck
- Electric panel by stairs from main to lower deck
- Tender not included

AUDIO VISUAL:

- Samsung TV 50" with electrical raising in the salon
- Bose surround sound speakers in main salon and main cabin
- LG TV's in VIP and guest cabins
- Samsung AV systems in the salon and main cabin
- KVH satellite TV antenna
- Fusion stereo system on the flybridge

DOMESTIC:

Main deck open Galley:

- Bottle fridge drawer
- Miele dishwasher
- Miele induction cooking hob (4 rings)
- Miele oven
- Isotherm fridge

All particulars are believed to be correct, but not guaranteed.

MONTE CARLO YACHTS 76

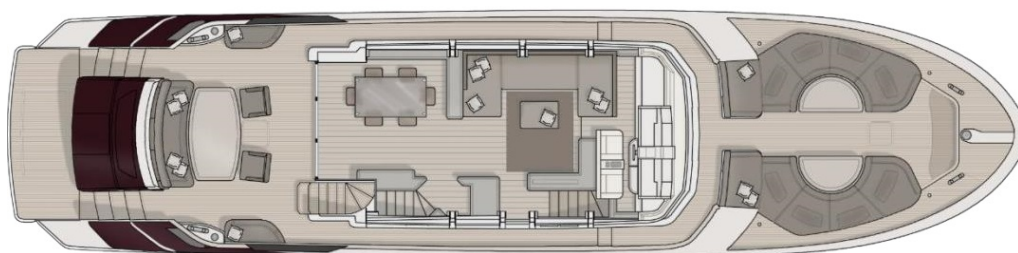
DOMESTIC (continued):

Lower deck galley:

- Isotherm fridge
- Top loading cooler/freezer
- Bosch induction cooking top (4 rings)
- Miele microwave
- Miele washing machine
- Miele dryer

Flybridge:

- Miele barbecue grill
- Fridge
- Icemaker



(main deck layout with open galley and sofa with table instead of dining area)

All particulars are believed to be correct, but not guaranteed.