



# M/Y UPSTREAM

Ferretti 920

Builder: Ferretti

Year: 2020

Accommodation: 11 Guests

Crew : 5

Length: 28.50m / 93.6ft

Beam: 6.78m / 22.3ft

Draft: 2.20m / 7.3ft

Speed: 21/24 knots



*Salon view forward*



*Salon view forward*

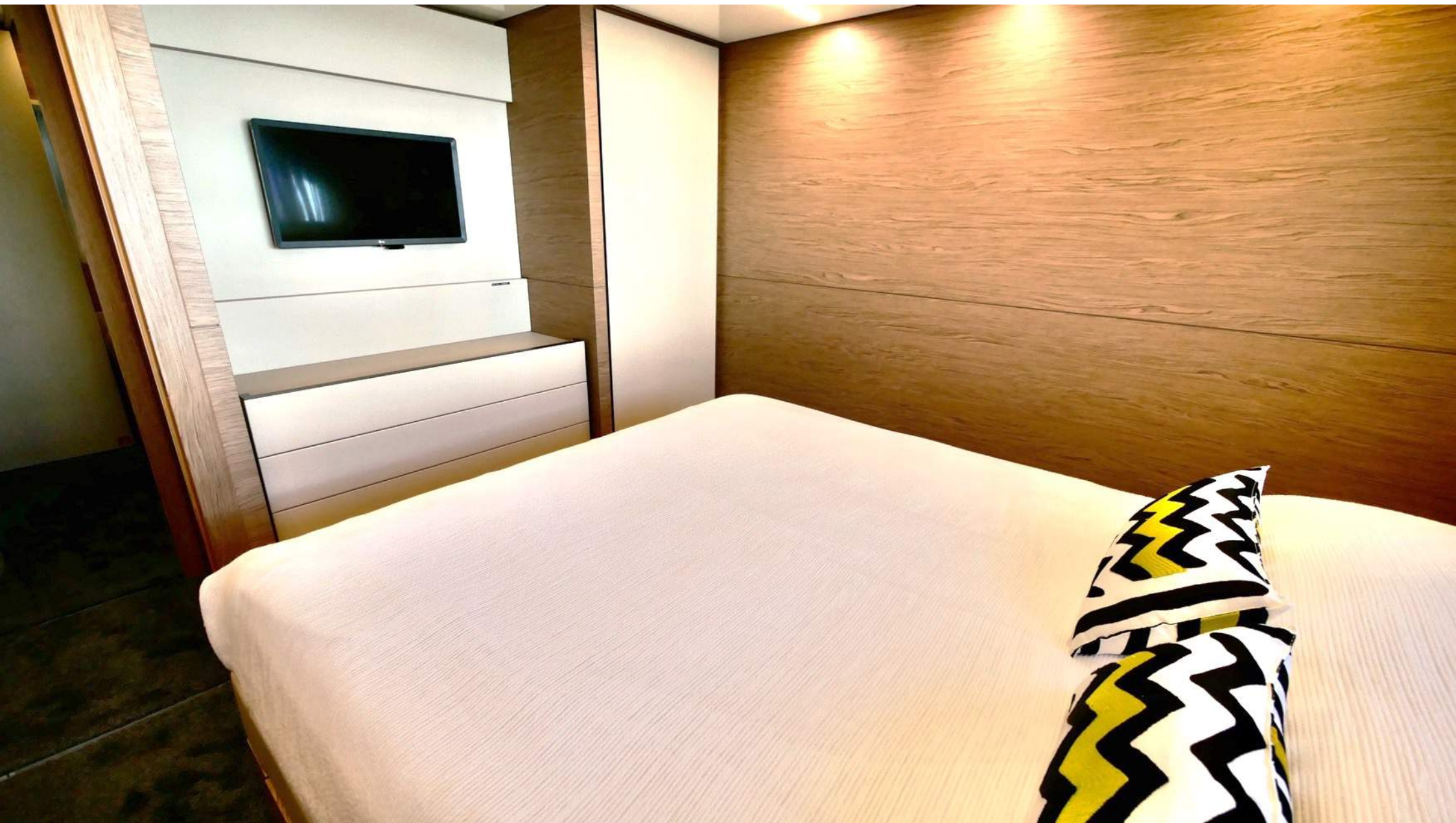


*Salon view backward*



*Master cabin*





*VIP cabin 1*



*VIP cabin 2*



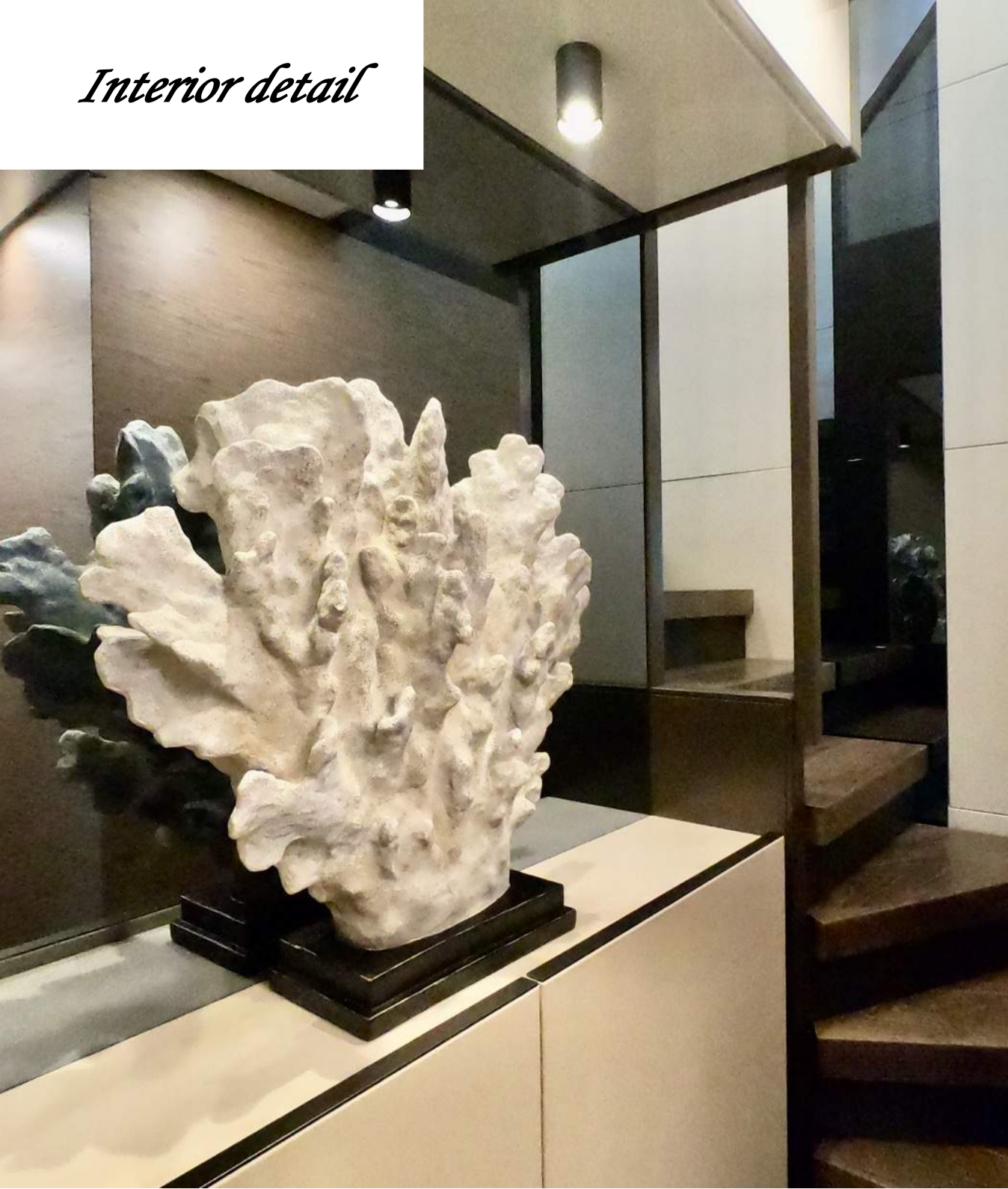
*Twin cabin 1*



*Twin cabin 2*

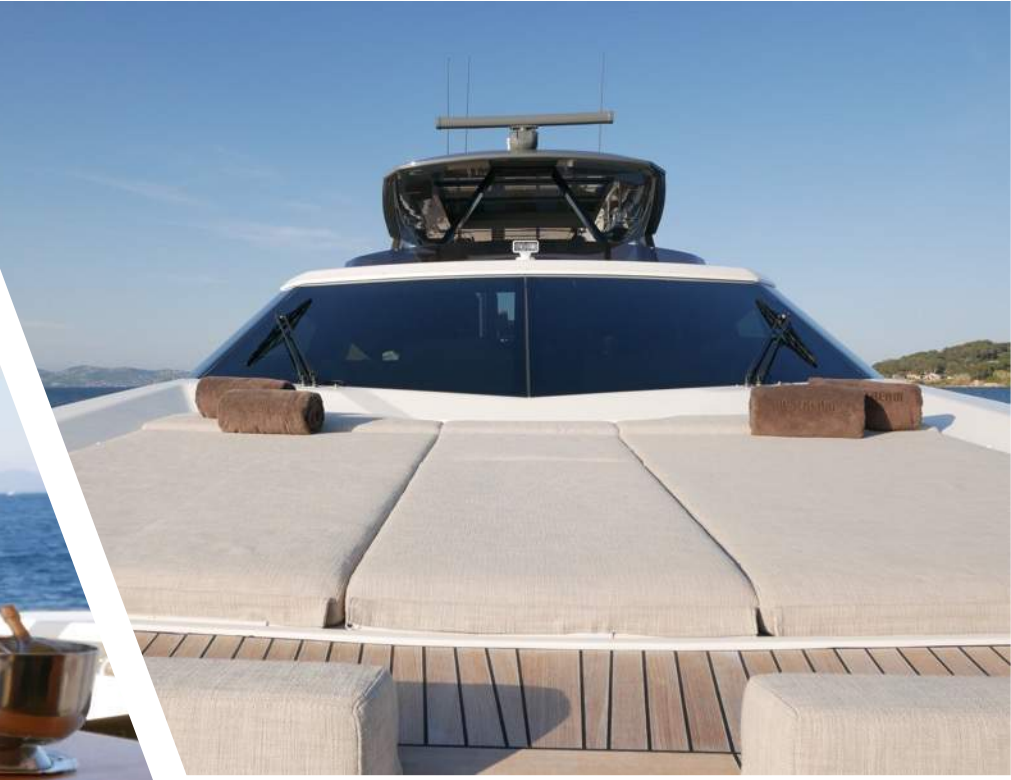


*Interior detail*



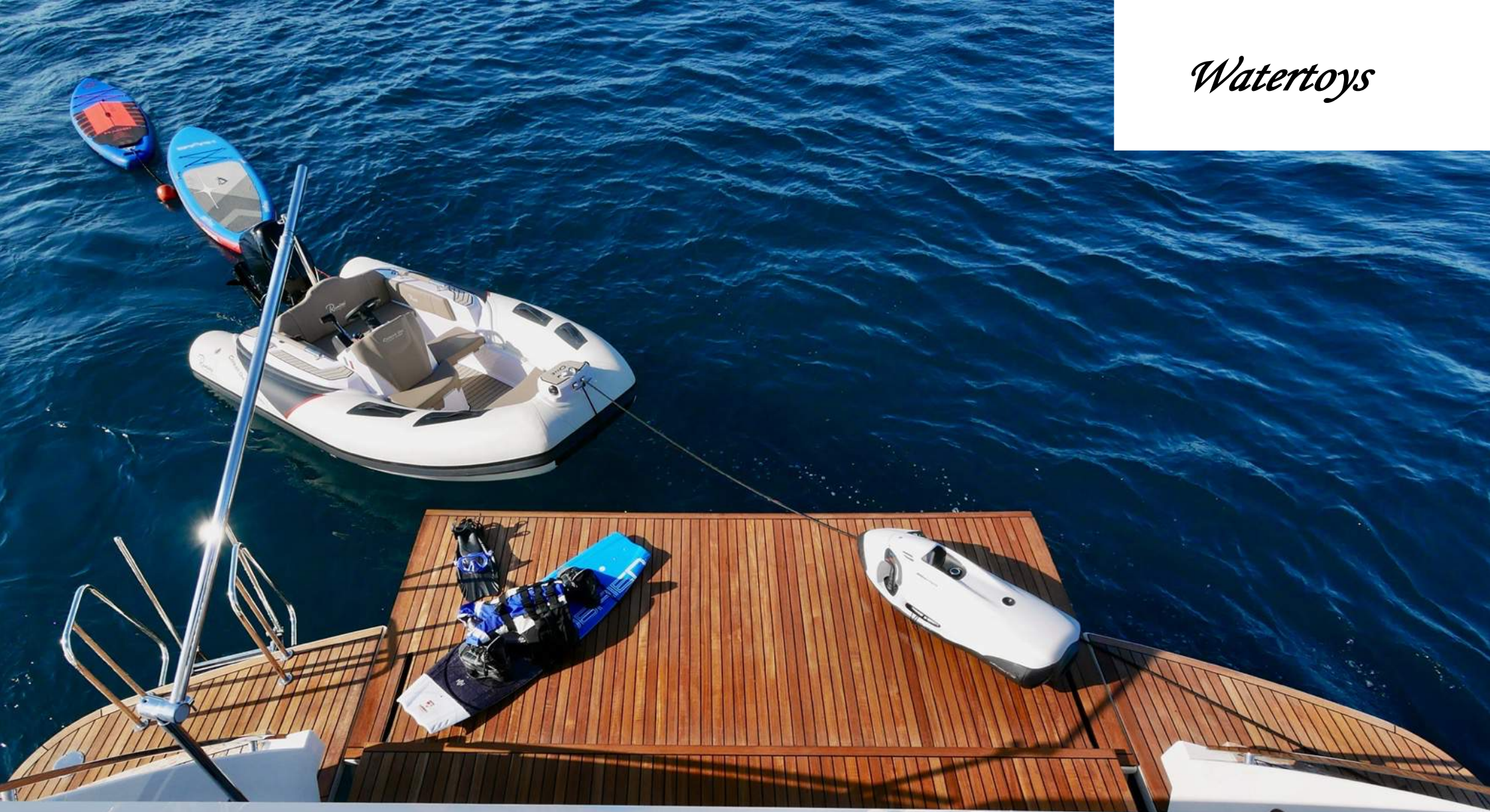


*Flybridge*





*Watertoys*



**URSTREEM**





# UPSTREAM FERRETTI 920

## Engines & Generators:

2 x MTU 12V 2000 M96L power 1948 mhp

**Fuel consumption:** 500 (at 19 knots) to 650 (at 24 knots) Litres/Hr

**Cruising speed:** 21 knots

**Max Speed:** 24 knots

## Refit/Maintenance Details:

Brand new boat delivered in June 2020

## Tenders & Toys:

Tender : Ranieri 3,65m + 60 HP engine SUZUKI

Waterski, wakeboard, donut

2x Seabob F5

2x Stand up paddle

Snorkeling equipment

## Guest Accommodation:

11 guests in 5 cabins. (1 Master, 2 VIP, 2 twin)

Pullman bed in twin cabin

## Communications:

Wi-Fi Connection 4G box for cruising in South of France.

Wi-Fi cannot be guaranteed in all cruising areas.

