

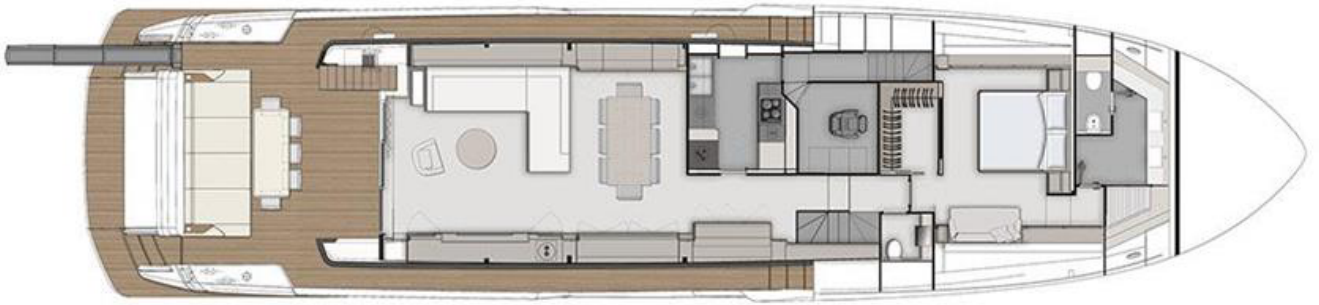
Hull number: 12 - year of built: 2020



MAIN FEATURES

BUILDER	FERRETTI YACHTS	MODEL	920
HULL NUMBER	12	TYPE	Motor Yachts
HULL TYPE	Planing	BOAT NAME	UPSTREAM
YEAR	2020	ARCHITECT	Zuccon International Project
HULL COLOUR	White	CONSTRUCTION MATERIAL	Fiberglass - VTR
LOA	28.49 [m] - 93.6 [ft]	BEAM	6.78 [m] - 22.3 [ft]
DRAFT	2.20 [m] - 7.3 [ft]	ENGINES	2x MTU 12V 2000 M96L - 1948hp
CRUISING SPEED	22 [kn]	MAX SPEED	26 [kn]
N° GUEST CABIN	5	N° CREW CABIN	3
N. TOILETS	6	DISPLACEMENT	99,000 [kg]
ON DISPLAY AT/IN	Cogolin	COUNTRY	France
ASKING PRICE	5,500,000.00 [euro]	VAT STATUS	Not paid





Technical information

Engines hours	1073
Trasmissions	Shaft Drive
Propellers	NIBRAL
Main generator	ONAN 27kW
Main generator hours	2365
Second generator	ONAN 27kW
Second generator hours	2363
Fuel tank	9000 litres
Water tank	1320 litres
Charge batteries	Yes
Inverter	Yes

Description per area

General description

Ferretti Yachts fans generally agree that the 920 is one of the best yachts the yard has ever produced. The design and the layout, both inside and on deck, are truly exceptional. And unusually for a flybridge yacht under 100ft the 920 has a beautiful owner's suite on the main deck, in true superyacht style.

The 'wide body' design of the 920 means there are no side decks up forward, so the main deck owner's suite is the full width of the boat, some 20ft! The panoramic outlook through the huge windows along both sides is spectacular. The cut-down bulwarks further back give an even more impressive view from the saloon. On the lower deck there are two double suites and two twin bed suites (plus a Pullman bunk in one twin cabin).

The flybridge is one of the 920s best features, extending right back to the transom, which makes it exceptionally spacious. The upper helm and a big lounging and dining area take up just over half the total area, leaving the remainder as clear floor space, sufficient for several free-standing chairs or loungers. The 920 also features Ferretti's ingenious lifting/lowering bathing platform, allowing the tender to be simply floated out of the garage! Raise the platform again and you have a fantastic 'beach club'.

M/Y UPSTREAM is offered with twin MTUs 1948hp. Top speed is 26.5 knots, with a range of 360nm. The 920's already wonderfully smooth seakeeping has been further enhanced with fin, zero-speed stabilizers to keep her rock steady both under way and at rest.

Optional list

Optional list

Stabilizing fins - Zero Speed
 Generator ONAN 27kW diff. from STD 19kW
 Smoke separator for each generator (22.5-27KW) 3"
 Filter RACOR for Generator
 Stern thruster hydraulic 40hp
 Idromar Watermaker 180L/hr
 3rd Control station in the cockpit fixed with cover
 Pre-disposition for davit installation on fly
 Side door on walk-way, Stbd side
 Side door on walk-way, Port side
 Hard Top with glass roof
 Manual glass door on salon side with new boat wood
 One touch up/down electric curtains salon
 Dimmer lights in salon
 Dimmer lights in cockpit
 Lighting in aft spoiler stairs
 Lights: watertight for staircase from cockpit to fly
 Garbage container in the cockpit
 Shore cable reeler: electrically operated
 Lights - underwater light (2) at stern
 Lights - underwater light (4) on sides
 Centralized REVERSO system: oil, inverter and generator change
 German Schuko plugs (all over the boat)
 Shore freshwater intake
 Skylight above MD corridor
 Flooring: teak on fly
 Teak on the side of aft platform
 Boat & Port name in stainless steel letters (backlit)
 Remote control for electro-hydraulic gangway (3)
 Canopy with 4 carbon poles
 Dimmer for lighting on fly
 Searchlight electrically controlled (big rectangular)
 Horn (1) painting in grey
 Radar Antenna painted grey
 Dome (2) painting in grey
 VHF Antenna (2) painting in grey
 Manual Bimini at Bow with 4 Carbon Poles
 Chain marking every 10m (2)
 Stainless Steel Anchor Chain
 Cockpit cover
 Galley Ernestomeda - diff. from STD
 Galley: 5 hobs cooking top - diff. from STD
 Fridge GE w/water/ice dispenser 230/24v with Inverter -diff. from STD
 Bigger sink (rectangular) in the galley-diff. from STD
 Two dust bins - diff. from STD
 Under sink cupboard
 Miele galley appliances -diff. from STD
 Cooking top
 Oven
 Dishwasher
 Miele separate washer and dryer
 Miele microwave oven in galley (overhead)
 Additional sockets in the galley - bow (3), aft (3)
 Plexiglass for handrails on fly – Smoke colour, aft and on aft sides
 Pullman bed in Stbd Guest cabin

Master bathroom sink -diff. from STD
 Two marble columns with built-in washbasins (standard model)
 Marble Silk Georgette -diff. from STD
 Marble in Master bathroom -diff. from STD
 Marble Silk Georgette for shower walls (aft, bow and panel above bench) Master bathroom taps and fittings
 -diff. from STD
 Bathroom's accessories -diff. from STD
 Reading light -diff. from STD

Olivari handles -diff. from STD
 Metal cabinet door top -diff. from STD
 Drawers instead of vanity -diff. from STD in VIP cabin port, aft
 Drawers and shelves in wardrobes in VIP and guest cabins
 Additional lights in walk-in closet in Master cabin
 Round mirrors in Master bathroom
 Mirror colour -diff. from STD - back-painted Seppia colour, all over the boat, except for Master cabin
 Soap dish and shampoo holder in all the showers in LD bathrooms
 Digital safe additional (2)
 Dimmer lights in all cabins
 One touch up/down electric curtains Master cabin
 Lighting for stairs towards LD cabins
 Mattress queen size (double spring) -diff. from STD
 Mattress single size (double spring) -diff. from STD
 Helmseat in main deck with electric device
 Helmseat in black leather -diff. from STD
 Sun-covers in black mesh for foredeck and sides - diff. from STD
 Freezer beneath the corridor floor 92 lt. 24v.
 Antenna empty dome for M7 for symmetry on roll-bar
 Antenna TV SAT KVH TV6 with standard decoder in saloon
 Antenna TV SAT: socket for decoder for cabins/interiors (6)
 Decoder installation (6)
 Premium Internet Package
 Shore Wifi device, connections and access management (VSAT ready) shore Wifi, WAN switch, myConnection
 software
 TV: electric raising device for TV 50"/55
 TV 55" in Master Cabin -diff. from STD
 TV 28" in Guest Cabin (Stbd)
 TV 55" in Salon MD -diff. From STD
 TV 22" in Crew Cabin in crew dinette (as per Captain's confirmation)
 Simrad NAIS 400 AIS System
 EPIRB emergency locator with ACR GPS
 Transducer B765LM
 Weather station ultrasonic NMEA-Airmar
 Simrad repeater in Captain's cabin for Simrad, NAVIOP and Cameras
 Full Simrad Navigation (Monitor 24")

Disclaimer

BROKERS offer the details of this vessel in good faith but cannot guarantee or warrant the accuracy of this information nor warrant the condition of the vessel. Pictures of the vessel may be taken from the catalogue. This document does not represent in any case a contractual term.
