

2019 RIVA 56 RIVALE – M/Y COCO



MAIN YACHT CHARACTERISTICS:

Boat Name:	COCO	Year:	2019
Builder/Make:	Riva	Model:	56 Rivale
Hull Number:	N/A	Type:	Motor Yacht
Length Overall:	56ft 8in 17,27m	Beam:	15ft 7in 4,74m
		Draft:	4ft 9in 1,45m
Engine Make/Model:	2x MAN V8	Engine horsepower:	2x 1200hp
Propulsion Type:	V Drive	Fuel Type:	Diesel
Cruising Speed:	32 knots	Max Speed:	38 knots
Engine Hours:	500	Range:	240 nautical miles
Guest Cabins:	3	Crew Cabins:	0
Total Guests:	6	Total Crew:	0
Total Guest Toilets:	3	Crew Toilets:	0
On Display:	Palma	Country:	Spain
Flag:	Italian	Private/Commercial:	Private
Asking Price:	€ 1,699,000	Tax Status:	VAT Paid

Disclaimer:

Brokers present the particulars of this Vessel in good faith; however, they cannot guarantee or warrant the accuracy of this information, nor do they provide any assurances regarding the Vessel's condition. Images of the Vessel may be sourced from a catalogue. This document shall not, under any circumstances, be deemed a contractual term.

2019 RIVA 56 RIVALE – M/Y COCO

TECHNICAL CHARACTERISTICS:

RCD / CE Category:	A - Ocean	Classifying Body:	RINA
Main Generator:	ONAN 17.5 kW 50Hz	2nd Generator:	/
Hours:	N/A	Hours:	/
Fuel Tank:	2300 lt 607 gal	Water Tank:	530 lt 140 gal
Black Tank:	250 lt 66 gal	Grey Tank:	250 lt 66 gal
Stabiliser:	Seakeeper	Bow thruster:	8.7hp
Stern thruster:	/	Air conditioning:	Yes

YACHT DESCRIPTION:

Architect:	Officina Italiana Design	Material:	GRP
Internal Furniture:	Gloss Mahogany	External Hull Colour:	Metallic London Grey

Riva has long been the undisputed master of the glamorous open-top sports cruiser, and the latest Riva 56' Rivale is a classic, taking the super-luxury GT cruising concept to another level. The hugely successful 52' Rivale that it replaces was always going to be a very hard act to follow, but Riva's brilliant designers have exceeded all expectations with this new model. The Riva 56' Rivale M/Y COCO, built in 2019 and delivered new in November of the same year, comes with a complete set of service records, ensuring its impeccable condition. It stands out with its unique Metallic London Grey exterior, offering a sophisticated and sleek appearance. Inside, it features three elegantly designed double cabins, each with its own ensuite bathroom for ultimate comfort and privacy.

LAYOUT:

The access to the main cabin is via a central sliding door, down a few (elegantly finished) steps and you descend into the salon, which comprises a galley to port and a sofa with dinette to starboard, plus a day-head with shower. COCO has the optional three-stateroom layout: an owner's en-suite amidships and to starboard, with a transverse double berth, plus an en-suite VIP forward in the bow and a portside twin-bunk guest stateroom.

BROKER COMMENTS:

What stands out about COCO is the evident level of care she has received since delivery. With a documented maintenance history and nothing left to catch up on, she is ready to be enjoyed from day one.

Disclaimer:

Brokers present the particulars of this Vessel in good faith; however, they cannot guarantee or warrant the accuracy of this information, nor do they provide any assurances regarding the Vessel's condition. Images of the Vessel may be sourced from a catalogue. This document shall not, under any circumstances, be deemed a contractual term.

2019 RIVA 56 RIVALE – M/Y COCO

SPECIFICATION:

EQUIPMENT:

General:

Exterior colour metallic London Grey
Interior furniture glossy Mahogany
Life raft

External:

Hydraulic passerelle
Electric movement of sun top bimini
Manual sun shade awning by bow sun cushions
Stainless steel handrail on sides to bow
Teak deck in cockpit, swim platform and side decks to bow
Electro-hydraulic swim ladder
Electric anchor winch (1700W) with chain and anchor
2 mooring winches at stern (1000W)
Electric opening garage for tender storage

Internal:

WC with vacuum flush
Black water tank system

Technical:

Generator Onan 50Hz 17.5 kW
Air conditioning Super Tropical throughout
Stabilizer Seakeeper
Bow thruster 8.7 hp
Electronic engine controls
On-board computer with boat functions
Shore power with automatic battery charger

NAVIGATION:

GPS antenna
VHF antenna
TV antenna
2 x 12" Simrad colour displays for plotter and radar
Autopilot
VHF radio with DSC
Depth and log

AUDIO VISUAL:

Sound system radio CD with speakers in saloon and cockpit
Flat screen TV 32" in saloon
HiFi sound system in main cabin
Flat screen TV in main cabin
Mini HiFi sound system in VIP cabin
Audio system with 4 speakers in cockpit

DOMESTIC:

Fridge 170 L with freezer 60 L
Microwave oven and ceramic hob
Dishwasher
Wet bar in cockpit with grill, icemaker and sink
Cutlery, glasses and plates

TENDER(S) & TOYS:

Disclaimer:

Brokers present the particulars of this Vessel in good faith; however, they cannot guarantee or warrant the accuracy of this information, nor do they provide any assurances regarding the Vessel's condition. Images of the Vessel may be sourced from a catalogue. This document shall not, under any circumstances, be deemed a contractual term.

2019 RIVA 56 RIVALE – M/Y COCO
SPECIFICATION (continued):

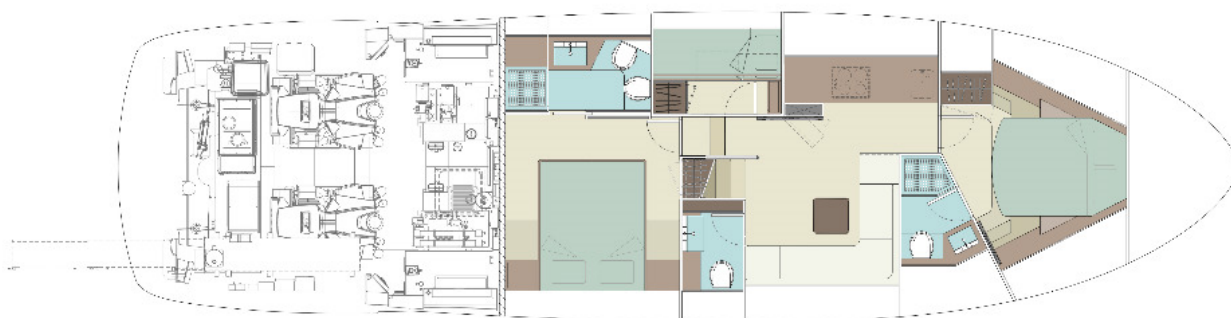
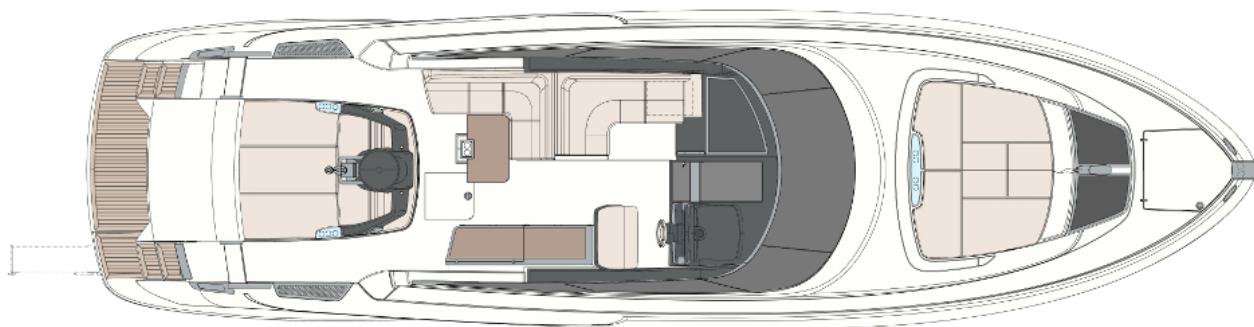
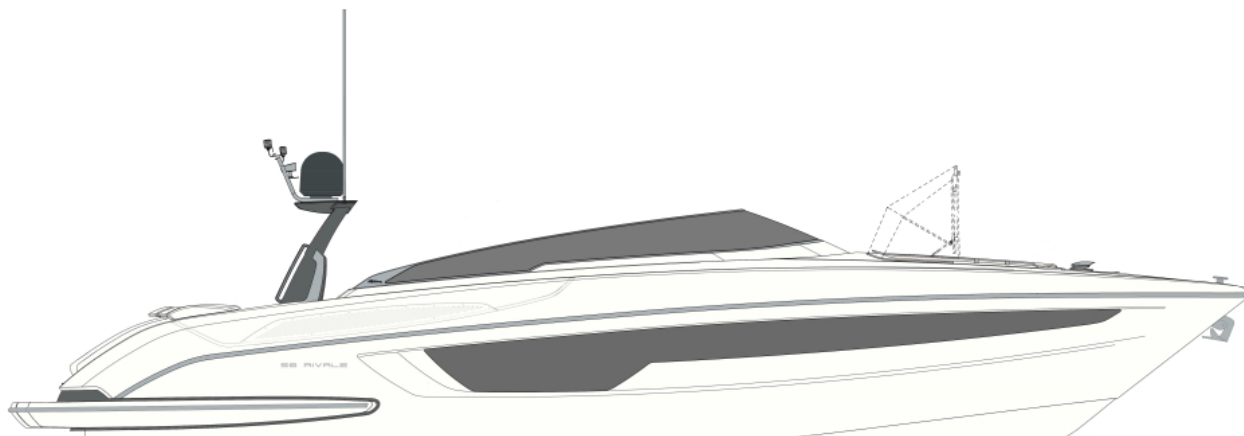
Tender Williams 325 Turbojet

Disclaimer:

Brokers present the particulars of this Vessel in good faith; however, they cannot guarantee or warrant the accuracy of this information, nor do they provide any assurances regarding the Vessel's condition. Images of the Vessel may be sourced from a catalogue. This document shall not, under any circumstances, be deemed a contractual term.

2019 RIVA 56 RIVALE – M/Y COCO

LAYOUT:



Disclaimer:

Brokers present the particulars of this Vessel in good faith; however, they cannot guarantee or warrant the accuracy of this information, nor do they provide any assurances regarding the Vessel's condition. Images of the Vessel may be sourced from a catalogue. This document shall not, under any circumstances, be deemed a contractual term.