

6X - PERSHING

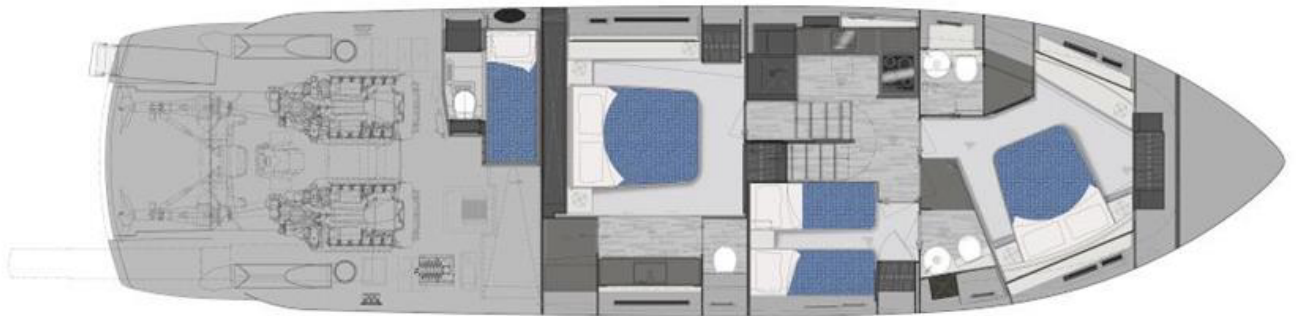
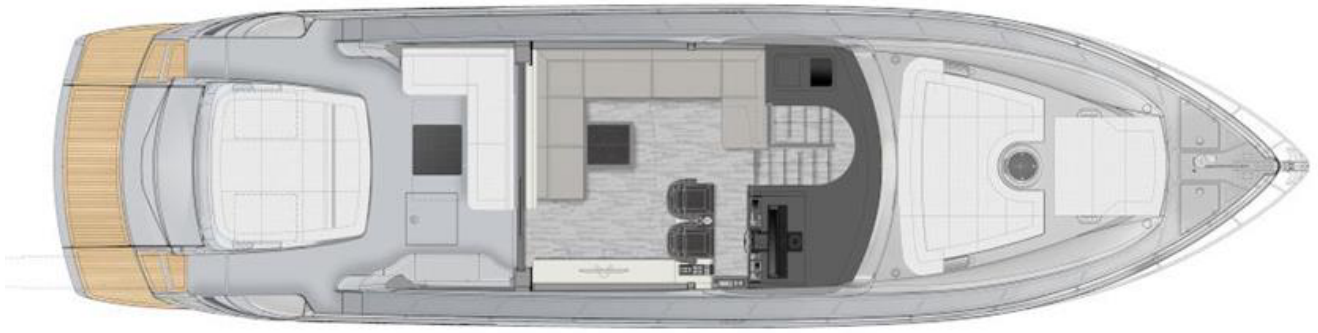
Hull number: 18 - year of built: 2024



MAIN FEATURES

BUILDER	PERSHING	MODEL	6X
HULL NUMBER	18	TYPE	Motor Yachts
HULL TYPE	Planing	BOAT NAME	DR. NO
YEAR	2024	CONSTRUCTION MATERIAL	Fiberglass - VTR
LOA	18.94 [m] - 62.14 [ft]	BEAM	4.80 [m] - 15.75 [ft]
DRAFT	1.45 [m] - 4.76 [ft]	ENGINES	2 X MAN 1550 hp
CRUISING SPEED	40 [kn]	MAX SPEED	48 [kn]
N° GUEST CABIN	3	N° CREW CABIN	1
N. TOILETS	3	ON DISPLAY AT/IN	Mallorca, Spain
COUNTRY	Spain	FLAG	Austrian
ASKING PRICE	2,790,000.00 [euro]	VAT STATUS	Paid





Technical information

Engines hours	85
Trasmissions	Surface Drive
Fuel tank	3200 lt
Water tank	740 lt

Description per area

General description

The 2024 Pershing 6X is a high-performance luxury yacht that excels in both comfort and speed. Featuring six-berth accommodation plus crew quarters, it offers spacious day areas with seamless indoor-outdoor integration, thanks to a fully retractable aft bulkhead. Powered by twin 1550 hp MAN engines with surface drives, the yacht delivers an exhilarating top speed of 48 knots and a cruising speed of 40 knots. M/Y DR. NO is in pristine, nearly brand-new condition, with only a few additional hours of use from the delivery trip. Available for immediate purchase.

LAYOUT:

Accommodation for 6 in 3 double cabins all ensuite plus crew cabin. Main cabin full beam with double bed, Vip cabin at bow with double bed and guest cabin with 2 single beds. Equipped galley. Saloon with L sofa, table and furniture accommodating TV. Cockpit sofa with table and sunbed above garage storage for tender and sunbed on bow.

ELECTRONICS:

Radar antenna Simrad
 GPS antenna
 AIS receiver Simrad
 Display for radar and plotter Simrad 19" 2 units
 Display 7" for SP management
 Autopilot
 Radio VHF
 Camera in engine room and cockpit connected to display by helm
 Electronic engine controls
 Joystick for manoeuvring in cockpit
 Dynamic positioning system
 Easy dock for surface drives
 Navigation System X-AID
 Easy set auto trim for surface drives topsystem
 Tiller
 Rudder angle indicator
 Electronic digital LCD engine control panel
 Electronic chain counter
 2 domes on arch for symmetry
 Epirb emergency locator with ACR GPS

EQUIPMENT:

All boat painted "ANNIVERSARY SILVER"
Cero speed stabilizer Seakeeper NG5
Teak decks in cockpit, swim platform and sidewalks to bow
Generator Nanni 50HZ 19.7 KW
Generator battery charger
Air conditioning Tropic 72.000 BTU throughout
Bow thruster and Stern thruster
Telescopic Hydraulic hideaway gangway
Hydraulic swim ladder
Anchor winch 2300W with s.s. anchor and chain 100m and
Ø 10
Stern mooring winch x2
Hard top electric opening
Door and window between saloon and cockpit electric
opening
Black mesh covers for front and side windows
Covers for aft sofas and sunbed cushions
Aft sun shade with carbon poles
Under water lights bicolour
Retractable cleats on swim platform
Water maker 130 l/h with control at helm
Inverter Mastervolt Sine 2500W / 220V / 24V
Electric wc with black water tank system w/discharge
Electric curtains in saloon and cabins
Electric black out curtains in cabins
Dimmer for lights exterior and all interior
Leather sofas
Boiler for hot water
4G / LTE connection system
Mosaic walls in shower in main cabin bathroom
Shore power 220v with automatic battery charger
Fire extinguisher system
Air compressor
Life jackets and life raft
Garage for tender storage with hydraulic opening, electric
winch and floor supports
Tender Williams 325 Turbojet

AUDIO VISUAL:

Satelite TV Antenna KVH TV6 with decoder
TV flat screen 40" with electric lifting system in saloon
TV flat screen 40" in main cabin
Stereo radio HiFi in saloon with subwoofer and speakers
interior and exterior
Stereo radio in main cabin with subwoofer and speakers
Stereo radio in Vip cabin and guest cabin

DOMESTIC:

Fridge 190 l. freezer 24v and 220v in galley
Box fridge in galley
Fridge in saloon
Ceramic hob
Micro wave oven
Dishwasher Bosch
Icemaker with independent water tank
Washing machine with drier
Cutlery, glasses and plates for 6p
Wetbar in cockpit with BBQ grill and sink

DISCLAIMER:

The Company offers the details of this vessel in good faith but cannot guarantee or warrant the accuracy of this information nor warrant the condition of the vessel. A buyer should instruct his agents, or his surveyors, to investigate such details as the buyer desires validated. This vessel is offered subject to prior sale, price change, or withdrawal without notice.