

## 6X - PERSHING

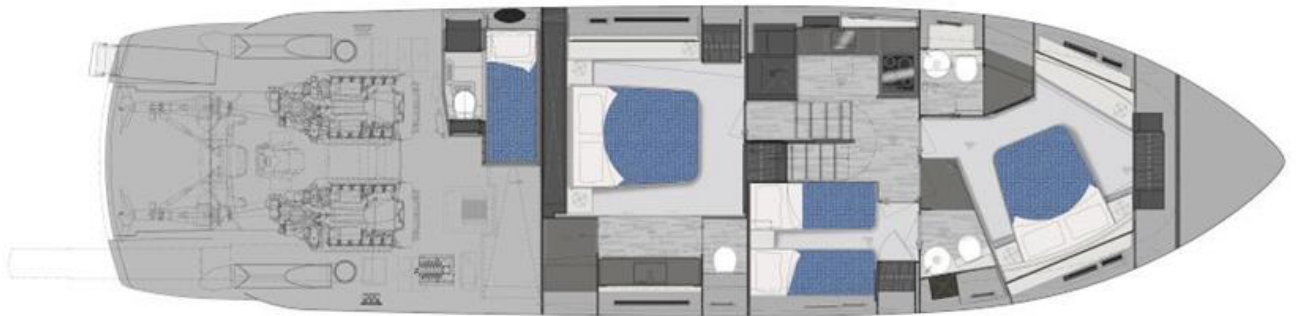
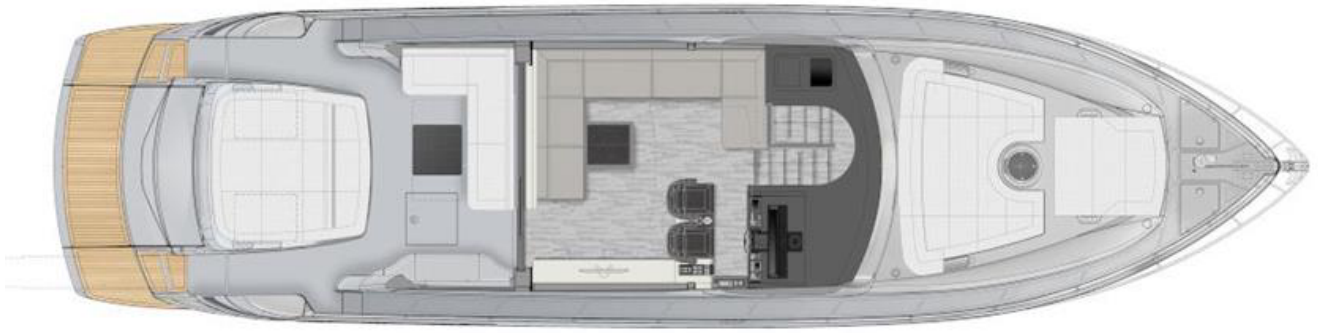
Hull number: 18 - year of built: 2024



### MAIN FEATURES

<b>BUILDER</b>	PERSHING	<b>MODEL</b>	6X
<b>HULL NUMBER</b>	18	<b>TYPE</b>	Motor Yachts
<b>HULL TYPE</b>	Planing	<b>BOAT NAME</b>	DR. NO
<b>YEAR</b>	2024	<b>CONSTRUCTION MATERIAL</b>	Fiberglass - VTR
<b>LOA</b>	18.94 [m] - 62.14 [ft]	<b>BEAM</b>	4.80 [m] - 15.75 [ft]
<b>DRAFT</b>	1.45 [m] - 4.76 [ft]	<b>ENGINES</b>	2 X MAN 1550 hp
<b>CRUISING SPEED</b>	40 [kn]	<b>MAX SPEED</b>	48 [kn]
<b>N° GUEST CABIN</b>	3	<b>N° CREW CABIN</b>	1
<b>N. TOILETS</b>	3	<b>ON DISPLAY AT/IN</b>	Mallorca, Spain
<b>COUNTRY</b>	Spain	<b>FLAG</b>	Austrian
<b>ASKING PRICE</b>	2,650,000.00 [euro]	<b>VAT STATUS</b>	Not paid





## Technical information

---

Engines hours	85
Trasmissions	Surface Drive
Fuel tank	3200 lt
Water tank	740 lt

---

## Description per area

---

### General description

The 2024 Pershing 6X is a high-performance luxury yacht that excels in both comfort and speed. Featuring six-berth accommodation plus crew quarters, it offers spacious day areas with seamless indoor-outdoor integration, thanks to a fully retractable aft bulkhead. Powered by twin 1550 hp MAN engines with surface drives, the yacht delivers an exhilarating top speed of 48 knots and a cruising speed of 40 knots. Sarinha is in pristine, nearly brand-new condition, with only a few additional hours of use from the delivery trip. Available for immediate purchase.

### LAYOUT:

Accommodation for 6 in 3 double cabins all ensuite plus crew cabin. Main cabin full beam with double bed, Vip cabin at bow with double bed and guest cabin with 2 single beds. Equipped galley. Saloon with L sofa, table and furniture accommodating TV. Cockpit sofa with table and sunbed above garage storage for tender and sunbed on bow.

### ELECTRONICS:

Radar antenna Simrad  
 GPS antenna  
 AIS receiver Simrad  
 Display for radar and plotter Simrad 19" 2 units  
 Display 7" for SP management  
 Autopilot  
 Radio VHF  
 Camera in engine room and cockpit connected to display by helm  
 Electronic engine controls  
 Joystick for manoeuvring in cockpit  
 Dynamic positioning system  
 Easy dock for surface drives  
 Navigation System X-AID  
 Easy set auto trim for surface drives topsystem  
 Tiller  
 Rudder angle indicator  
 Electronic digital LCD engine control panel  
 Electronic chain counter  
 2 domes on arch for symmetry  
 Epirb emergency locator with ACR GPS

**EQUIPMENT:**

All boat painted "ANNIVERSARY SILVER"  
Cero speed stabilizer Seakeeper NG5  
Teak decks in cockpit, swim platform and sidewalks to bow  
Generator Nanni 50HZ 19.7 KW  
Generator battery charger  
Air conditioning Tropic 72.000 BTU throughout  
Bow thruster and Stern thruster  
Telescopic Hydraulic hideaway gangway  
Hydraulic swim ladder  
Anchor winch 2300W with s.s. anchor and chain 100m and  
Ø 10  
Stern mooring winch x2  
Hard top electric opening  
Door and window between saloon and cockpit electric  
opening  
Black mesh covers for front and side windows  
Covers for aft sofas and sunbed cushions  
Aft sun shade with carbon poles  
Under water lights bicolour  
Retractable cleats on swim platform  
Water maker 130 l/h with control at helm  
Inverter Mastervolt Sine 2500W / 220V / 24V  
Electric wc with black water tank system w/dischage  
Electric curtains in saloon and cabins  
Electric black out curtains in cabins  
Dimmer for lights exterior and all interior  
Leather sofas  
Boiler for hot water  
4G / LTE connection system  
Mosaic walls in shower in main cabin bathroom  
Shore power 220v with automatic battery charger  
Fire extinguisher system  
Air compressor  
Life jackets and life raft  
Garage for tender storage with hydraulic opening, electric  
winch and floor supports  
Tender Williams 325 Turbojet

**AUDIO VISUAL:**

Satelite TV Antenna KVH TV6 with decoder  
TV flat screen 40" with electric lifting system in saloon  
TV flat screen 40" in main cabin  
Stereo radio HiFi in saloon with subwoofer and speakers  
interior and exterior  
Stereo radio in main cabin with subwoofer and speakers  
Stereo radio in Vip cabin and guest cabin

**DOMESTIC:**

Fridge 190 l. freezer 24v and 220v in galley  
Box fridge in galley  
Fridge in saloon  
Ceramic hob  
Micro wave oven  
Dishwasher Bosch  
Icemaker with independent water tank  
Washing machine with drier  
Cutlery, glasses and plates for 6p  
Wetbar in cockpit with BBQ grill and sink

**DISCLAIMER:**

The Company offers the details of this vessel in good faith but cannot guarantee or warrant the accuracy of this information nor warrant the condition of the vessel. A buyer should instruct his agents, or his surveyors, to investigate such details as the buyer desires validated. This vessel is offered subject to prior sale, price change, or withdrawal without notice.