

## RIVA 88 FOLGORE



### “ROCKET”

With the sensational Riva 88 Domino and the stunning Riva 76 Perseo, Riva showed that they truly have the concept of the sportfly motor yacht down to a fine art, with a distinctive Riva flair that no-one else could ever match. Well, now they have gone even better, with this absolutely gorgeous Riva 88 Folgore, surely one of their most beautiful designs ever. The decor throughout the 88 Folgore is simply breathtaking, as you'd expect from Riva. It's the fine details that make the difference between the excellent and the exceptional, all crafted with meticulous care and enhanced by some exquisite touches of colour, materials and finishes. This is interior design at its very best. The 88 Folgore has 3 double suites and one twin, with the galley and crew quarters separate and self-contained towards the stern. The huge full-beam owner's suite offers a choice of either his & hers bathrooms, or one huge bathroom spanning the full beam of the boat.

YEAR	:	2021
L.O.A.	:	26.92 m
LENGTH HULL	:	23.98 m
BEAM	:	6.31 m
DRAFT	:	1.97 m
WEIGHT	:	70 tons
DIESEL	:	8.000 litres
WATER	:	1,200 litres
ENGINES	:	2 x 2638 hp MTU 16V 2000 M96L
HOURS	:	486
FLAG	:	British
LYING	:	Spain
PRICE	:	€5,500,000 (ex VAT)

All particulars are believed to be correct, but not guaranteed.

## RIVA 88 FOLGORE

### LAYOUT:

Spacious exterior areas, sportbridge with helm station, seating and sunbathing, bow with seating with table and sunbathing area, cockpit with table L sofa and foldable chairs plus sunbathing area above tender garage.

Open plan main deck encompassing a comfortable salon with seating area plus separate dining table with chairs and a complete main helm position.

Accommodation for 7 guests in 4 cabins. Large main cabin covering the entire beam with full beam bathroom. VIP cabin towards the bow, with double bed, storage and ensuite bathroom. Port guest cabin with double bed with sliding mechanism to convert to 2 singles and bathroom. Stb cabin with one single bed and a treadmill plus bathroom.

Crew accommodation 2 cabins (3 beds) with 2 bathrooms

### NAVIGATION:

Radar antenna

GPS antenna

Navigational Simrad upgrade 2 displays at interior helm with black box radar plotter GPS echosounder

Automatic pilot with rudder angle indicator interfaced to plotter GPS

Night vision camera Flir Low Light Vision

Radio VHF with DSC

Monitoring system with LCD touch connected to CCTV cameras (cockpit and engine room)

Meteo station

Interceptor indicators

Rudder angle indicator

Simrad repeater in crew dinette

Control station for engines and thrusters in cockpit

Dynamic positioning system

Joystick dual station

Anchor chain counters

All particulars are believed to be correct, but not guaranteed.

## RIVA 88 FOLGORE

### EQUIPMENT:

Exterior all boat painted custom colour  
Airconditioning Super Tropic 180.000 BTU  
2 x Onan generators 27KVA (1050 hours May 2024)  
Seakeeper gyroscopic zero speed stabilizers  
Hydraulic Bow thrusters  
Stern thrusters  
Concealed Hydraulic gangway with automatic stanchions  
2 stern mooring winches 1700W  
2 electric 2700W anchor winches with main anchor 80kg with 100m chain  
and secondary 50kg with 100m chain  
Teak flooring on swim platform, all main deck and on sportbridge area  
Shore power 220v with Glendening system and with automatic battery  
chargers  
Automatic battery charger for generators  
Air compressor in engine room  
Electric opening roof in fwd area of saloon  
Antenna V-Sat Mini internet KVH-V7  
Premium internet package  
Dimmers for lights throughout  
Electric up/down system for main helm pilot seat  
Electric curtains through out  
Electric black out blinds in all guest cabins  
Electric WC with system black water tank (330 l.)  
Grey water tank system (330 l.)  
Hot water system with 2x80 l. boilers  
Sun shade in aft cockpit  
Sun shade in bow area  
Sun shade on fly  
2 liferafts x10p  
Garage with electro hydraulic opening  
Jet ski launching system  
Tender launching system  
Tender Williams 395 Sportjet  
Jet ski Sea Doo GTR 230

All particulars are believed to be correct, but not guaranteed.

## RIVA 88 FOLGORE

Cont.

Portholes mosquito nets

Safe in master and Vip cabins

Extra kit ambience lights

### AUDIO VISUAL:

Satelite TV antenna KVH TV6 with decoder in saloon

Flat screen TV 55" in saloon

Flat screen TV 55" in master cabin

Flat screen TV in Vip cabin

Sound system in saloon with speakers inside and exterior

Premium sound system in master cabin

Sound system in Vip and guest cabins

Premium sound system in exterior areas Sonance

Sound system in 2 crew cabins

### DOMESTIC:

Side by side door Fridge freezer

Oven Miele

Dishwasher

Extractor

Ceramic hob

Wine cellar

Complete set of tableware and cutlery for 12 p.

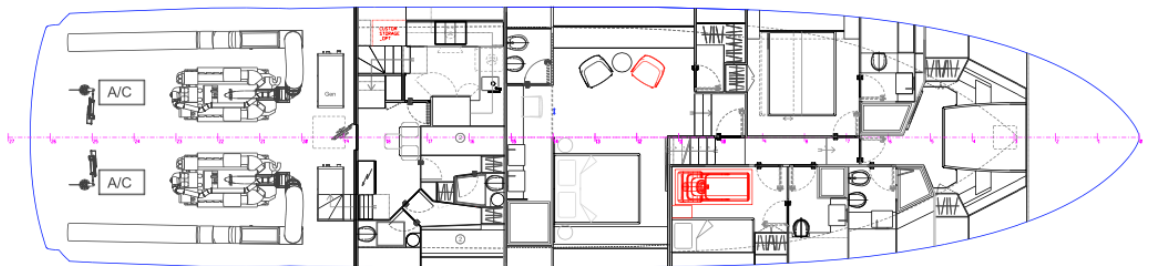
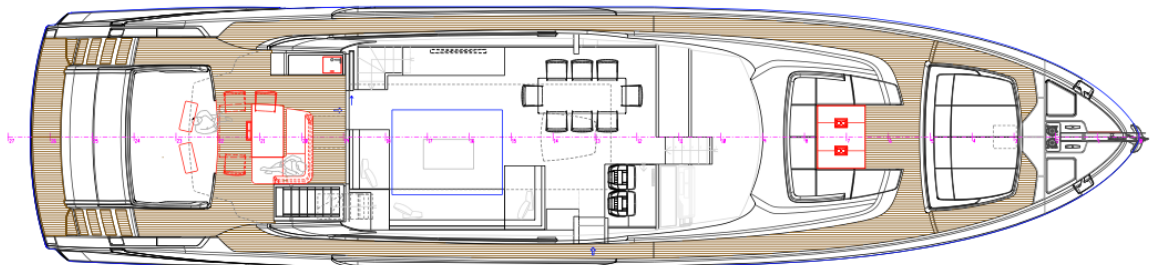
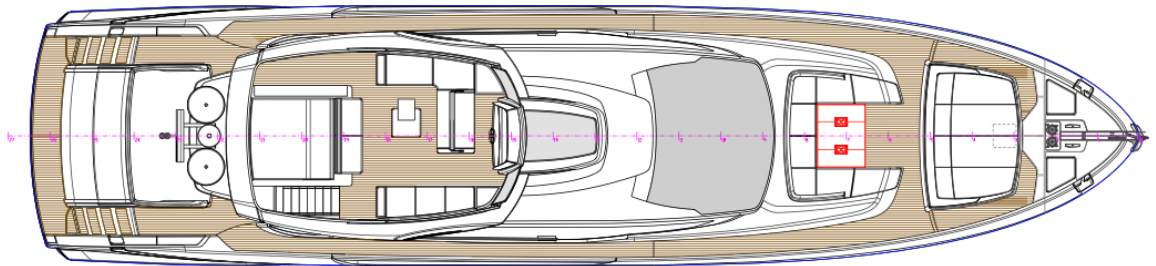
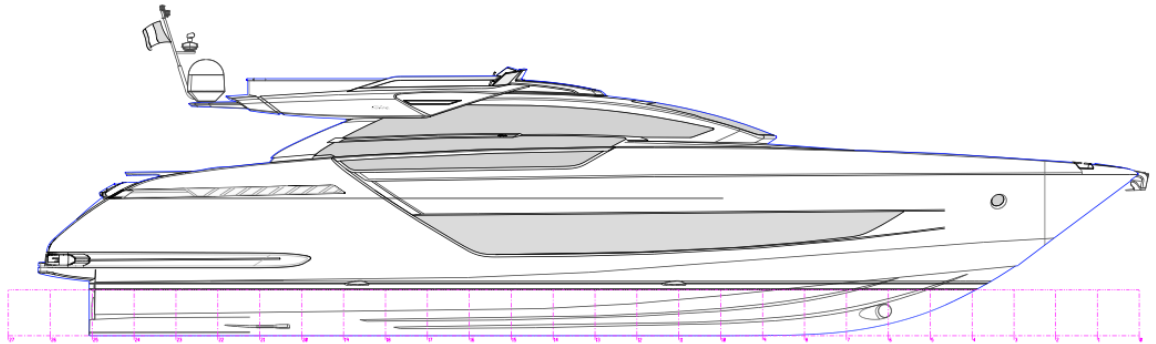
Separate washer and dryer unit

Note:

Privately owned and in perfect conditions. Including MTU extended warranty.

All particulars are believed to be correct, but not guaranteed.

# RIVA 88 FOLGORE



All particulars are believed to be correct, but not guaranteed.