

2011 CUSTOM LINE NAVETTA 33 CRESCENDO – M/Y UNICORN



MAIN YACHT CHARACTERISTICS:

Boat Name:	UNICORN	Year:	2011
Builder/Make:	Custom Line	Model:	Navetta 33 Crescendo
Hull Number:	N/A	Type:	Motor Yacht
Length Overall:	106ft 6in 32.5m	Beam:	23ft 7m
		Draft:	5ft 6in 1.7m
Engine Make/Model:	MAN 1400HP	Engine horsepower:	2x 1400hp
Propulsion Type:	Shaft Drive	Fuel Type:	Diesel
Cruising Speed:	15 knots	Max Speed:	17 knots
Engine Hours:	2650	Range:	900 nautical miles
Guest Cabins:	4	Crew Cabins:	3
Total Guests:	8	Total Crew:	5
Total Guest Toilets:	5	Crew Toilets:	2
On Display:	Didim	Country:	Turkey
Flag:	British	Private/Commercial:	Private
Asking Price:	4450000	Tax Status:	VAT Not Paid

Disclaimer:

Brokers present the particulars of this Vessel in good faith; however, they cannot guarantee or warrant the accuracy of this information, nor do they provide any assurances regarding the Vessel's condition. Images of the Vessel may be sourced from a catalogue. This document shall not, under any circumstances, be deemed a contractual term.

2011 CUSTOM LINE NAVETTA 33 CRESCENDO – M/Y UNICORN

TECHNICAL CHARACTERISTICS:

RCD / CE Category:	A - Ocean	Classifying Body:	RINA
Main Generator:	Kohler 50kW	2nd Generator:	Kohler 50kW
Hours:	12241	Hours:	N/A
Fuel Tank:	16300 lt 3585 gal	Water Tank:	10000 lt 2199 gal
Black Tank:	3200 lt 845 gal	Grey Tank:	3200 lt 845 gal
Fin Stabilisers:	Yes	Cero Speed Gyrostabilisaers:	Yes
Bow Thruster:	50hp	Stern Thruster:	58hp
Air Conditioning:	Tropical		

YACHT DESCRIPTION:

Architect:	Ferretti Custom Line Style Department	Material:	GRP
Internal Furniture:	Canaletto Walnut	External Hull Colour:	White

The Custom Line Navetta 33 Crescendo, M/Y UNICORN, embodies elegance and innovation in luxury yachting. At 33 meters in length, this masterpiece of Italian craftsmanship is designed for comfort, efficiency and timeless sophistication. Its sleek exterior features clean lines and large windows, blending seamlessly with the sea. The spacious interior is marked by meticulous attention to detail, offering a refined atmosphere. Accommodating up to 10 guests in five luxurious cabins, including a full-beam master suite, M/Y UNICORN ensures every journey is a personalized experience of relaxation and indulgence. The yacht boasts advanced stabilization systems for smooth cruising and versatile outdoor spaces, including a sun deck with panoramic views, a shaded dining area and a swim platform for easy water access. Powered by twin engines, M/Y UNICORN delivers reliable performance and efficient fuel consumption, making it ideal for extended voyages or coastal escapes.

LAYOUT:

UNICORN accommodates up to 10 guests in five cabins, including a full-beam master suite on the main deck and four guest cabins below, all with en-suite facilities. The main saloon is bright and spacious, leading to an elegant dining area and direct access to the aft cockpit. The upper deck features an additional saloon and helm station, opening to a large sun deck with Jacuzzi, wet bar and sunbathing areas. Crew accommodation comprises three cabins forward with independent access, ensuring privacy and efficient service. The overall layout is well-balanced, offering generous circulation, distinct social zones and practical long-range functionality.

BROKER COMMENTS:

UNICORN represents a strong opportunity in the 32-metre displacement segment. Her five-cabin configuration, zero-speed stabilization, and comprehensive equipment package make her equally suited for private ownership or charter operation. The combination of MAN reliability, Kohler generators, and extensive Furuno navigation systems provides operational confidence. With substantial fuel and water capacity, she is a capable cruising platform offering serious volume at a competitive level. For buyers seeking range, stability and pedigree Italian build quality, UNICORN merits close inspection.

Disclaimer:

Brokers present the particulars of this Vessel in good faith; however, they cannot guarantee or warrant the accuracy of this information, nor do they provide any assurances regarding the Vessel's condition. Images of the Vessel may be sourced from a catalogue. This document shall not, under any circumstances, be deemed a contractual term.

2011 CUSTOM LINE NAVETTA 33 CRESCENDO – M/Y UNICORN

SPECIFICATION:

EQUIPMENT:

General:

Teak decks all over
Sun top bimini of upper sun deck
Cockpit extendable teak table
12 Glyn Peter Machine lacquered chairs plus 2 large same ones
Wheel house with Portuguese bridge walk around leading to bow sun bathing area
Upper deck large L sofa with pouf/table exterior area
2 liferafts 10p each
All curtains electric raising device
All lights with dimmer
Tubular lights under beds
Centralized vacuum system

External:

Hydro massage bath tub on upper sun deck
Sun bathing cushions bow area and 3 sun beds on upper sun deck
Wet bar with fridge, Gaggenau grill and sink on upper sun deck
2 anchor winches 3.5kw each with 150 mt 14.5mm chain and 125 kg anchors and cleaning system
2 electric stern mooring winches
Crane for tender lifting 1000 kg capacity
Hide away cleats on swim platform
10 underwater lights on sides and stern

Internal:

Canaletto Walnut interior

Technical:

Fin navigating stabilizers
Cero speed gyro stabilizers "Anti rolling gyro"
Tropical air conditioning
2 generators Kohler 50KW with smoke separators (1750 and 1750 hours)
Alfa laval fuel filtering system
Racor prefilters for engines and generators
Water maker Idromar 360 l/h
Air compressor
Hydro cleaner with 3 outlets
Distribution system 230v / 400v ac 50 Hz triphase powered by generators or shore power
Automatic battery chargers Mastervolt
Glendening 100A 400v 3 poles + ground (20mt)

NAVIGATION:

Hydraulic bow thrusters 50 hp
Hydraulic stern thrusters 58 hp
Digital engine information display
Electronic engine controls
Rudder angle indicator
Digital chain counters
Depth, wind and log instruments

AUDIO VISUAL:

TV satellite antenna Navisystem 95 NTT with decoder in saloon, upper saloon, main cabin and gym
TV flat screen Thin 55" fitted on wall in upper deck saloon
TV flat screen Thin 55" with electric up-down system in main saloon
TV flat screen Thin 40" fitted on wall in main cabin

Disclaimer:

Brokers present the particulars of this Vessel in good faith; however, they cannot guarantee or warrant the accuracy of this information, nor do they provide any assurances regarding the Vessel's condition. Images of the Vessel may be sourced from a catalogue. This document shall not, under any circumstances, be deemed a contractual term.

2011 CUSTOM LINE NAVETTA 33 CRESCENDO – M/Y UNICORN

SPECIFICATION (continued):

TV flat screen Thin 42" fitted on wall in gym
TV flat screen Thin 32" fitted on wall in 3 guest cabins
TV flat screen Thin 19" in galley, helm and in captains cabin
Remote control for lights, curtains, A/V and Hi-Fi x2
Stereo system Bose Home cinema with surround system speakers in upper deck saloon, main saloon and main cabin
Hi Fi system audio/video server with speakers Fusion in 3 cabins and gym
Stereo system radio CD/DVD with speakers in galley and captains cabin
Stereo radio CD with speakers in crew cabins
I-Pod docking station in saloon, upper saloon and cabins
Water tight speakers on upper sun deck, bow area, cockpit and garage

DOMESTIC:

Upper sundeck wetbar with grill BBQ, sink, fridge and icemaker with independent water tank
Main galley:
Double door fridge freezer 504 l. with water and ice dispenser (220v and 24v through inverter)
Wine cooler
Extra freezer 90 l.
Extra fridge
Ceramic induction type hob
Micro wave oven
Conventional oven 90cm
Extractor
Dishwasher

TENDER(S) & TOYS:

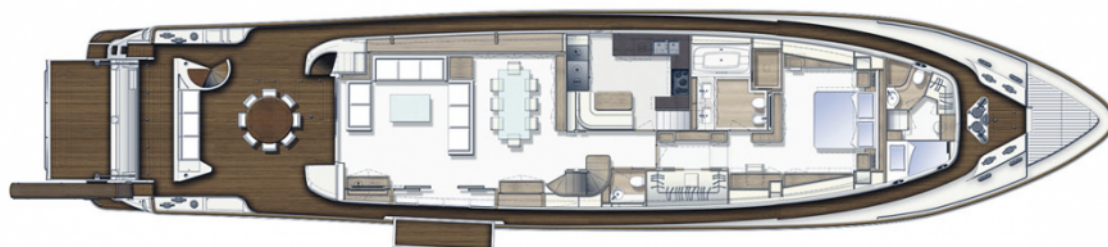
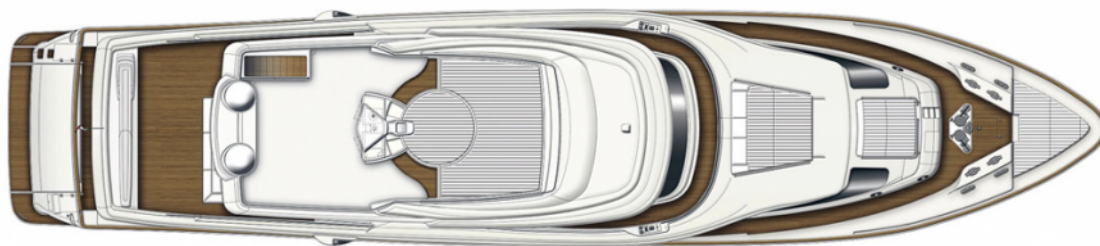
Williams 385 Jet in garage
3 seater Jet ski Sea Doo GTX Limited iS 260 on flybridge

Disclaimer:

Brokers present the particulars of this Vessel in good faith; however, they cannot guarantee or warrant the accuracy of this information, nor do they provide any assurances regarding the Vessel's condition. Images of the Vessel may be sourced from a catalogue. This document shall not, under any circumstances, be deemed a contractual term.

2011 CUSTOM LINE NAVETTA 33 CRESCENDO – M/Y UNICORN

LAYOUT:

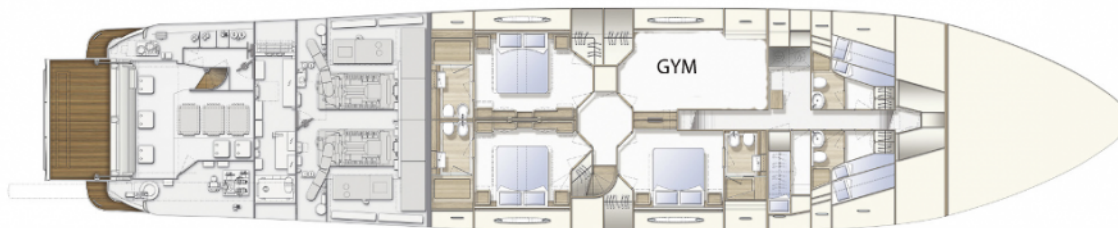


Disclaimer:

Brokers present the particulars of this Vessel in good faith; however, they cannot guarantee or warrant the accuracy of this information, nor do they provide any assurances regarding the Vessel's condition. Images of the Vessel may be sourced from a catalogue. This document shall not, under any circumstances, be deemed a contractual term.

2011 CUSTOM LINE NAVETTA 33 CRESCENDO – M/Y UNICORN

LAYOUT (continued):



Disclaimer:

Brokers present the particulars of this Vessel in good faith; however, they cannot guarantee or warrant the accuracy of this information, nor do they provide any assurances regarding the Vessel's condition. Images of the Vessel may be sourced from a catalogue. This document shall not, under any circumstances, be deemed a contractual term.