

2018 RIVA 56 RIVALE – M/Y CASHFLOW



MAIN YACHT CHARACTERISTICS:

Boat Name:	CASHFLOW	Year:	2018
Builder/Make:	Riva	Model:	56 Rivale
Hull Number:	08	Type:	Motor Yacht
Length Overall:	56ft 7in 17.27m	Beam:	15ft 6in 4.74m
		Draft:	4ft 8in 1.45m
Engine Make/Model:	2x MAN V8 D2868 LE426	Engine horsepower:	2x 1000hp
Propulsion Type:	V Drive	Fuel Type:	Diesel
Cruising Speed:	28 knots	Max Speed:	34 knots
Engine Hours:	640	Range:	230 nautical miles
Guest Cabins:	3	Crew Cabins:	0
Total Guests:	6	Total Crew:	0
Total Guest Toilets:	3	Crew Toilets:	0
On Display:	Mallorca	Country:	Spain
Flag:	Jersey	Private/Commercial:	Private
Asking Price:	€ 1,250,000	Tax Status:	VAT Not Paid

Disclaimer:

Brokers present the particulars of this Vessel in good faith; however, they cannot guarantee or warrant the accuracy of this information, nor do they provide any assurances regarding the Vessel's condition. Images of the Vessel may be sourced from a catalogue. This document shall not, under any circumstances, be deemed a contractual term.

2018 RIVA 56 RIVALE – M/Y CASHFLOW

TECHNICAL CHARACTERISTICS:

RCD / CE Category:	A - Ocean	Classifying Body:	RINA
Main Generator:	ONAN 13.5kW	2nd Generator:	/
Hours:	N/A	Hours:	/
Fuel Tank:	2300 lt 608 gal	Water Tank:	530 lt 140 gal
Black Tank:	250 lt 66 gal	Grey Tank:	250 lt 66 gal
Stabiliser:	Seakeeper	Stern thruster:	8.7hp
Air conditioning:	Yes		

YACHT DESCRIPTION:

Architect:	Officina Italiana Design	Material:	GRP
Internal Furniture:	Timber Rovere Safari	External Hull Colour:	Metallic Blue Sera

M/Y CASHFLOW is a Riva 56 Rivale finished in the elegant Blu Sera hull colour—a striking yet refined presence on the water. Powered by twin MAN V8-1000 engines, she offers smooth, confident cruising and the unmistakable handling of a well-balanced hull. Her layout combines comfort and practicality, with inviting deck spaces and a thoughtfully designed interior that makes the most of every detail. CASHFLOW reflects the essence of understated luxury, ideal for an owner who appreciates clean lines, solid performance, and timeless Italian design. A well-presented example of a used model, ready for her next chapter.

LAYOUT:

The layout of M/Y CASHFLOW is both practical and well balanced. The cockpit offers generous seating and sunbathing areas, creating an inviting space for relaxing or entertaining underway and at anchor. Below deck, the accommodation is arranged to maximise comfort and privacy, with a well-appointed owner's cabin forward and guest cabins positioned to make the most of available space. The galley and dinette are thoughtfully integrated, providing a comfortable interior setting that complements the yacht's sociable exterior areas.

BROKER COMMENTS:

CASHFLOW represents the kind of opportunity that remains highly sought after in the pre-owned market. Carefully maintained and ready for immediate use, she offers a straightforward route into one of Riva's most successful open yacht platforms, combining enjoyable ownership with enduring appeal.

Disclaimer:

Brokers present the particulars of this Vessel in good faith; however, they cannot guarantee or warrant the accuracy of this information, nor do they provide any assurances regarding the Vessel's condition. Images of the Vessel may be sourced from a catalogue. This document shall not, under any circumstances, be deemed a contractual term.

2018 RIVA 56 RIVALE – M/Y CASHFLOW

SPECIFICATION:

EQUIPMENT:

General:

Metallic Blu Sera hull
3 cabins version
Timber Rovere Safari

External:

Teak in cockpit and aft
Underwater lights
Ambient lights

Internal:

Extra table in saloon
Decoder in owner's cabin

Technical:

Standard engines MAN 1000hp
Seakeeper stabilizer
ONAN generator upgrade from 11kW to 13.5kW
Stern thruster 8.7 hp

NAVIGATION:

Garmin navigation system
Antenna TV SAT KVH TV6

AUDIO VISUAL:

/

DOMESTIC:

Fridge 42L in cockpit

TENDER(S) & TOYS:

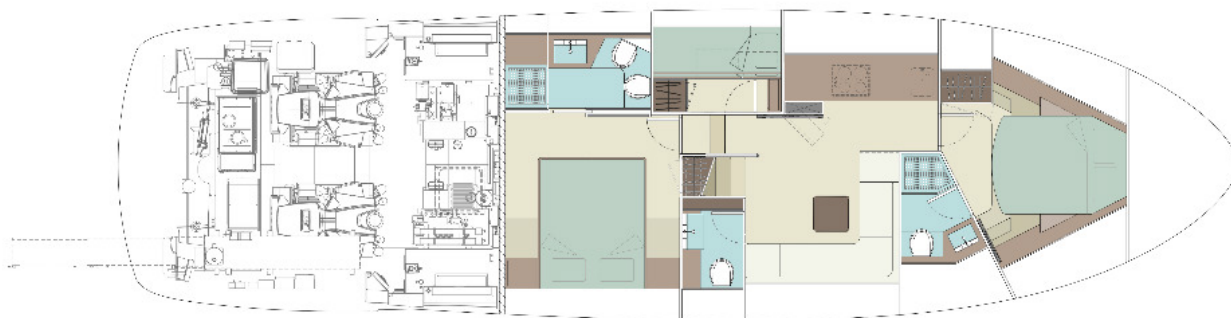
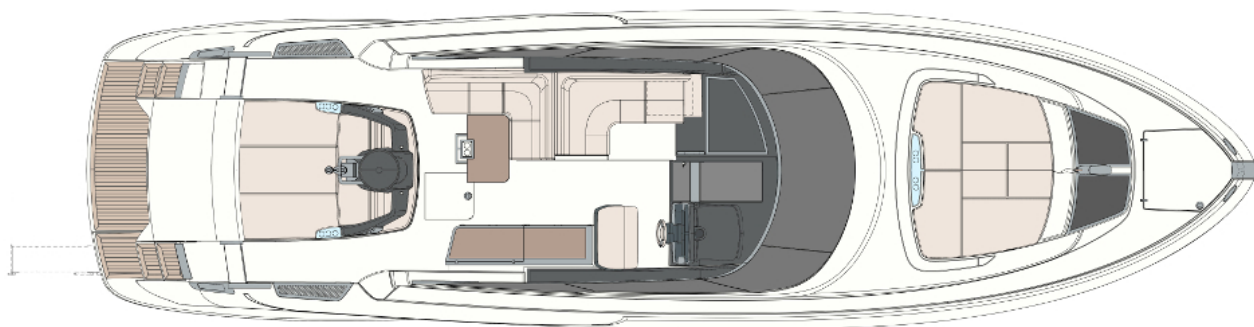
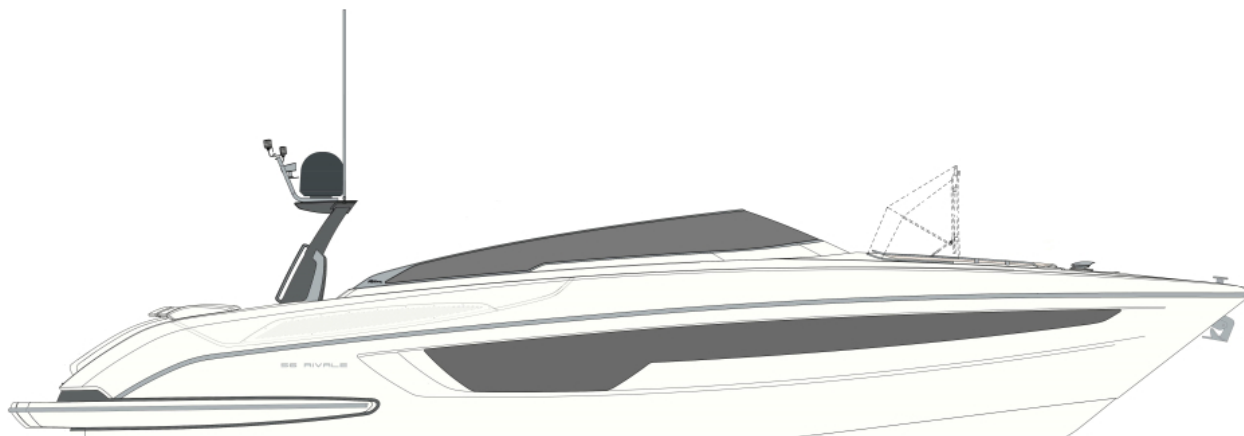
Tender Williams Turbo Jet 325 – 80 hp

Disclaimer:

Brokers present the particulars of this Vessel in good faith; however, they cannot guarantee or warrant the accuracy of this information, nor do they provide any assurances regarding the Vessel's condition. Images of the Vessel may be sourced from a catalogue. This document shall not, under any circumstances, be deemed a contractual term.

2018 RIVA 56 RIVALE – M/Y CASHFLOW

LAYOUT:



Disclaimer:

Brokers present the particulars of this Vessel in good faith; however, they cannot guarantee or warrant the accuracy of this information, nor do they provide any assurances regarding the Vessel's condition. Images of the Vessel may be sourced from a catalogue. This document shall not, under any circumstances, be deemed a contractual term.