

2024 RIVA 68' DIABLE – M/Y BOOK ENDS



MAIN YACHT CHARACTERISTICS:

Boat Name:	BOOK ENDS	Year:	2024
Builder/Make:	Riva	Model:	68' Diable
Hull Number:	11	Type:	Motor Yacht
Length Overall:	67ft 8in 20.67m	Beam:	17ft 4in 5.29m
		Draft:	5ft 4in 1.78m
Engine Make/Model:	MAN D2876 LE423	Engine horsepower:	2 x 1650hp
Propulsion Type:	V Drive	Fuel Type:	Diesel
Cruising Speed:	34 knots	Max Speed:	40 knots
Engine Hours:	162	Range:	250 nautical miles
Guest Cabins:	3	Crew Cabins:	1
Total Guests:	6	Total Crew:	1
Total Guest Toilets:	3	Crew Toilets:	1
On Display:	La Spezia	Country:	Italy
Flag:	Cayman Islands	Private/Commercial:	Private
Asking Price:	€ 2,990,000	Tax Status:	VAT Not Paid

Disclaimer:

Brokers present the particulars of this Vessel in good faith; however, they cannot guarantee or warrant the accuracy of this information, nor do they provide any assurances regarding the Vessel's condition. Images of the Vessel may be sourced from a catalogue. This document shall not, under any circumstances, be deemed a contractual term.

2024 RIVA 68' DIABLE – M/Y BOOK ENDS

TECHNICAL CHARACTERISTICS:

RCD / CE Category:	A - Ocean	Classifying Body:	RINA
Main Generator:	ONAN 20 kW	2nd Generator:	ONAN 20 kW
Hours:	N/A	Hours:	N/A
Fuel Tank:	3800 lt 1004 gal	Water Tank:	600 lt 106 gal
Black Tank:	200 lt 53 gal	Grey Tank:	330 lt 87 gal
Gyroscopic stabiliser:	Yes	Stern thruster:	Yes
Bow thruster:	/	Air conditioning:	Yes

YACHT DESCRIPTION:

Architect:	Officina Italiana Design	Material:	GRP
Internal Furniture:	High-grade timber	External Hull Colour:	Shark Grey

The Riva 68' Diable M/Y BOOK ENDS is a luxury motor yacht combining high performance and refined style. At 20.67 meters long with a 5.29-meter beam, it offers spacious interiors and exteriors. Powered by twin MAN 1650HP engines, it reaches speeds up to 40 knots. Accommodating 16 guests, it features three elegant cabins with chocolate wengé wood and a crew cabin. Amenities include sunbeds, a swim ladder, Seakeeper NG9 stabilizer, Garmin navigation, air conditioning and entertainment systems. With a 3,800-liter fuel tank and 600-liter water tank, it's ideal for extended voyages. The yacht is currently visible in La Spezia, Italy.

LAYOUT:

The Riva 68' Diable features a dynamic layout designed to maximize outdoor enjoyment and interior comfort. The cockpit offers generous seating, sunpads and a seamless connection to the hydraulic swim platform, creating an inviting beach-club atmosphere. Wide side decks lead forward to additional sunbathing areas. Inside, the bright saloon combines lounge seating and dining space within an elegant setting finished in rich chocolate wengé wood. Below deck, the three-cabin layout includes a full-beam master, forward VIP and twin guest cabin, complemented by a separate crew cabin. The arrangement ensures privacy, functionality, and luxurious onboard living throughout.

BROKER COMMENTS:

BOOK ENDS offers the unmistakable presence and character that continue to make the Riva 68' Diable so desirable. Well specified and ready for immediate use, she presents an attractive opportunity to acquire a modern Riva that balances enjoyment, comfort and strong market appeal.

Disclaimer:

Brokers present the particulars of this Vessel in good faith; however, they cannot guarantee or warrant the accuracy of this information, nor do they provide any assurances regarding the Vessel's condition. Images of the Vessel may be sourced from a catalogue. This document shall not, under any circumstances, be deemed a contractual term.

2024 RIVA 68' DIABLE – M/Y BOOK ENDS

SPECIFICATION:

EQUIPMENT:

General:

Touch screen
Computer
Wi-Fi

External:

Cockpit cushions
Cockpit table
Gangway
Hydraulic SwimStep
Teak cockpit
Teak side decks
Cockpit cover

Internal:

Cockpit speakers
Flat screen TV
TV set

Technical:

Generator Onan
Inverter
Gyroscopic stabilizer
Seakeeper
Stern thruster
Battery charger
Heating
Hot water

NAVIGATION:

AIS
Autopilot
Compass
Depth sounder
GPS
Plotter
Radar
VHF

AUDIO VISUAL:

Flat screen TV
TV set
Cockpit speakers

DOMESTIC:

Air conditioning
Deep freezer
Dishwasher
Microwave oven
Oven
Refrigerator
Washing machine

TENDER(S) & TOYS:

Disclaimer:

Brokers present the particulars of this Vessel in good faith; however, they cannot guarantee or warrant the accuracy of this information, nor do they provide any assurances regarding the Vessel's condition. Images of the Vessel may be sourced from a catalogue. This document shall not, under any circumstances, be deemed a contractual term.

2024 RIVA 68' DIABLE – M/Y BOOK ENDS

SPECIFICATION (continued):

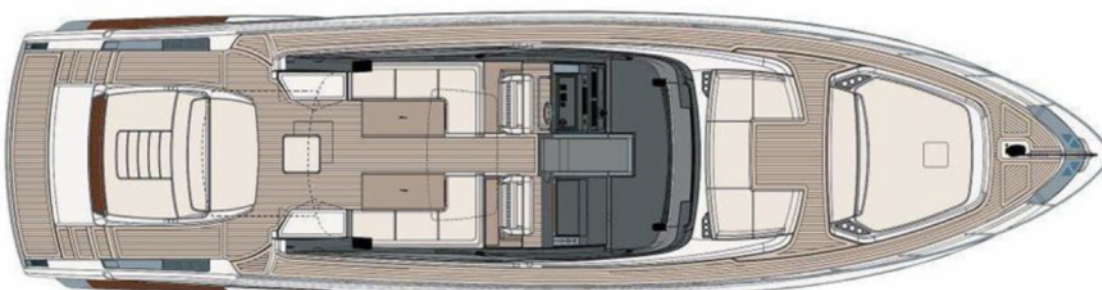
/

Disclaimer:

Brokers present the particulars of this Vessel in good faith; however, they cannot guarantee or warrant the accuracy of this information, nor do they provide any assurances regarding the Vessel's condition. Images of the Vessel may be sourced from a catalogue. This document shall not, under any circumstances, be deemed a contractual term.

2024 RIVA 68' DIABLO – M/Y BOOK ENDS

LAYOUT:

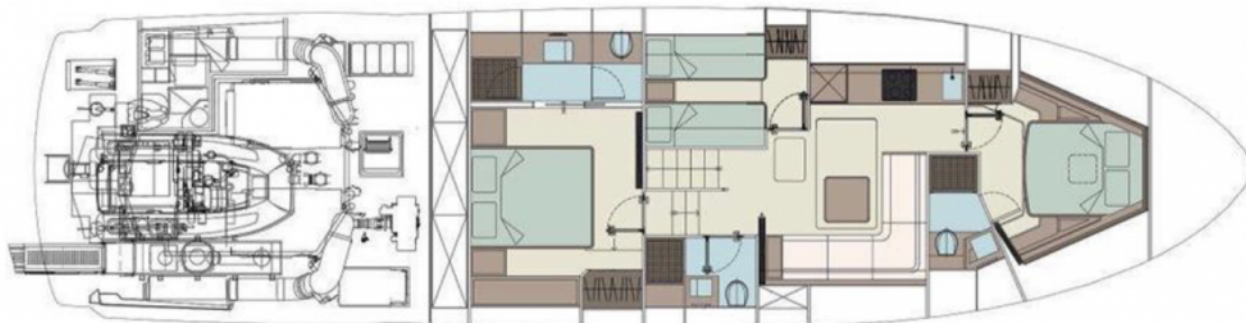


Disclaimer:

Brokers present the particulars of this Vessel in good faith; however, they cannot guarantee or warrant the accuracy of this information, nor do they provide any assurances regarding the Vessel's condition. Images of the Vessel may be sourced from a catalogue. This document shall not, under any circumstances, be deemed a contractual term.

2024 RIVA 68' DIABLE – M/Y BOOK ENDS

LAYOUT (continued):



Disclaimer:

Brokers present the particulars of this Vessel in good faith; however, they cannot guarantee or warrant the accuracy of this information, nor do they provide any assurances regarding the Vessel's condition. Images of the Vessel may be sourced from a catalogue. This document shall not, under any circumstances, be deemed a contractual term.