

2007 SANLORENZO 108 – M/Y PETRUS



MAIN YACHT CHARACTERISTICS:

Boat Name:	PETRUS	Year:	2007
Builder/Make:	Sanlorenzo	Model:	108
Hull Number:	N/A	Type:	Motor Yacht
Length Overall:	108ft 32.92m	Beam:	24ft 3in 7.4m
		Draft:	6ft 1in 1.85m
Engine Make/Model:	MTU 16V 2000 CR	Engine horsepower:	2x 2400hp
Propulsion Type:	Shaft Drive	Fuel Type:	Diesel
Cruising Speed:	20 knots	Max Speed:	25 knots
Engine Hours:	4700	Range:	420 nautical miles
Guest Cabins:	4	Crew Cabins:	3
Total Guests:	8	Total Crew:	4
Total Guest Toilets:	5	Crew Toilets:	2
On Display:	Livorno	Country:	Italy
Flag:	Saint Kitts and Nevis	Private/Commercial:	Private
Asking Price:	€ 3,489,000	Tax Status:	Not Paid

Disclaimer:

Brokers present the particulars of this Vessel in good faith; however, they cannot guarantee or warrant the accuracy of this information, nor do they provide any assurances regarding the Vessel's condition. Images of the Vessel may be sourced from a catalogue. This document shall not, under any circumstances, be deemed a contractual term.

2007 SANLORENZO 108 – M/Y PETRUS

TECHNICAL CHARACTERISTICS:

RCD / CE Category:	A - Ocean	Classifying Body:	RINA
Main Generator:	Kohler 50 OEZ	2nd Generator:	Kohler 50 OEZ
Hours:	13,600	Hours:	11,700
Fuel Tank:	16000 lt 4227 gal	Water Tank:	2500 lt 660 gal
Black Tank:	650 lt 172 gal	Grey Tank:	650 lt 172 gal
Zero-Speed Stabilisers:	TRAC	Bow Thruster:	Yes

YACHT DESCRIPTION:

Architect:	Francesco Paszkowski Design	Material:	GRP
Internal Furniture:	American walnut	External Hull Colour:	White

M/Y PETRUS is a striking Sanlorenzo 108, seamlessly blending Italian elegance with powerful performance. Powered by twin MTU 16V2000CR engines, she cruises effortlessly with impressive speed and reliability. Her sleek profile and expansive outdoor areas are matched by a luxurious interior, offering spacious accommodations for guests to relax in refined comfort. Designed with both style and functionality in mind, PETRUS features sophisticated craftsmanship, modern amenities and state-of-the-art technology. Whether cruising the Mediterranean or hosting onboard gatherings, she delivers an exceptional yachting experience. M/Y PETRUS embodies timeless design and performance, making her a standout in her class.

LAYOUT:

M/Y PETRUS features a well-balanced layout designed to maximise both comfort and privacy. The main deck hosts a spacious saloon with dining area and direct access to the aft cockpit, creating seamless indoor-outdoor living. A full-beam master suite is positioned forward on the main deck, offering generous space and refined detailing. The lower deck accommodates four additional guest cabins, all en-suite, ensuring comfort for family and friends. Expansive exterior areas include a large flybridge, aft deck lounge and foredeck sunbathing space. Separate crew quarters allow for discreet and efficient service throughout extended cruising.

BROKER COMMENTS:

The Sanlorenzo SL106 remains one of the most balanced yachts in her class, combining elegant design with serious offshore capability. Her refined interiors and timeless exterior lines create enduring appeal. For buyers seeking pedigree, craftsmanship, and proven performance, the SL106 represents a compelling and confident choice.

Disclaimer:

Brokers present the particulars of this Vessel in good faith; however, they cannot guarantee or warrant the accuracy of this information, nor do they provide any assurances regarding the Vessel's condition. Images of the Vessel may be sourced from a catalogue. This document shall not, under any circumstances, be deemed a contractual term.

2007 SANLORENZO 108 – M/Y PETRUS

SPECIFICATION:

EQUIPMENT:

General:

Marquipt lateral stair
Swim ladder
Besenzoni passerelle

External:

Electric bimini top (flybridge)
Electric tent for jacuzzi
Jacuzzi for 4 persons
Custom crane for launching tender and waverunner

Internal:

Safety box
Waeco mini fridge

Technical:

TRAC zero-speed stabilizer
TRAC zero-speed stabilizer system
Side-Power bow thruster
Watermaker: HRO
2 Lofrans anchor windlasses
2 Lofrans mooring windlasses
Converter: Teknocea model Sinemar 75 kVA
Gensets: (x2) Kohler 50EOZ – 11,700 and 13,600 hrs
2 Quick water heaters

NAVIGATION:

2 Raymarine 260E VHF radios
Raymarine E120 radar/chartplotter
Raymarine M1500 GPS
4 Raymarine ST90 (autopilot, wind, rudder, speed & depth)
2 MTU engine monitor Blue System electronic
1 Sanlorenzo intercom
Sanshin searchlight control
Sea Energy system monitor command control / alarm system Riviera compass
KVH TracPhone
Camera monitor system

AUDIO VISUAL:

Sea Tel antenna SAT TV system
Sony car stereo audio system
4G LTE internet network system
Sonos audio system on flybridge, aft cockpit, and forward area
Sony 52" LCD TV
Satellite TV box
Bose DVD surround system linked to Sonos system
LG 42" LCD TV
Bose DVD home theater system
Sony 26" TV
Bose surround home theater system
Pioneer 50" TV
DVD home theater system
2x Sony 26" TVs
Yamaha DVD home theater system in crew mess

Disclaimer:

Brokers present the particulars of this Vessel in good faith; however, they cannot guarantee or warrant the accuracy of this information, nor do they provide any assurances regarding the Vessel's condition. Images of the Vessel may be sourced from a catalogue. This document shall not, under any circumstances, be deemed a contractual term.

2007 SANLORENZO 108 – M/Y PETRUS

SPECIFICATION (continued):

Yamaha home theater system in each cabin
QNAP hard disk backup support system
Riello backup system for Sonos audio

DOMESTIC:

Raritan icemaker
Waeco fridge
Hot top: Miele
Scotsman icemaker
Marvel fridge
Microwave: Miele
Stove: Wolfe, 5-burner
Oven: Wolf
Coffee maker: Miele
Dishwasher: Miele
Freezer: Sub-Zero
Fridge: Sub-Zero
Wine cellar: Sub-Zero
Extractor: Miele
Washer machine: Miele
Dryer machine: Miele
2 Nespresso coffee makers
Vacuum cleaner

Disclaimer:

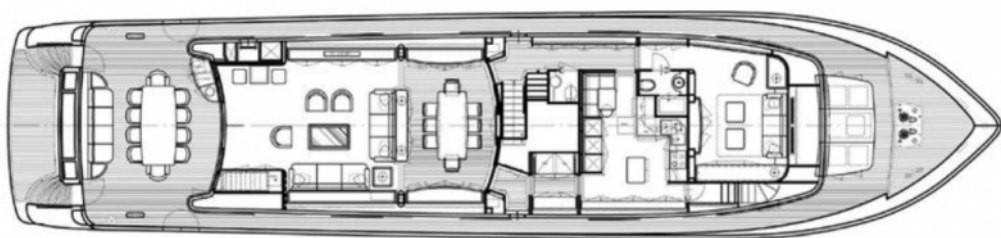
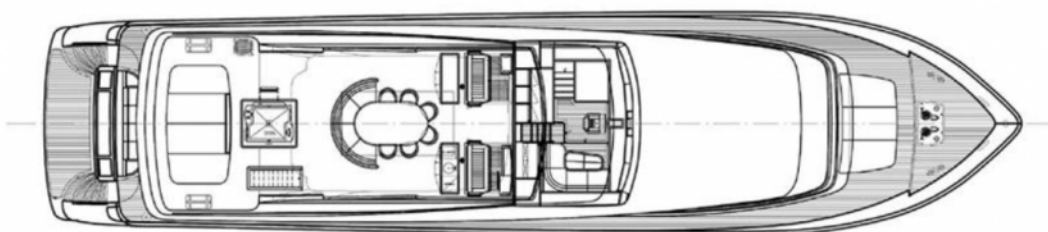
Brokers present the particulars of this Vessel in good faith; however, they cannot guarantee or warrant the accuracy of this information, nor do they provide any assurances regarding the Vessel's condition. Images of the Vessel may be sourced from a catalogue. This document shall not, under any circumstances, be deemed a contractual term.

2007 SANLORENZO 108 – M/Y PETRUS

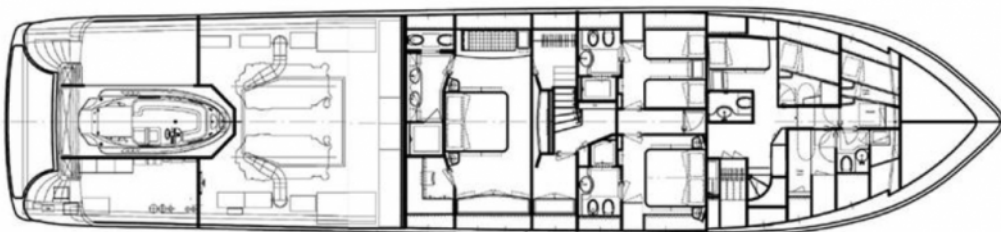
LAYOUT:



Longitudinal View



Main Deck



Disclaimer:

Brokers present the particulars of this Vessel in good faith; however, they cannot guarantee or warrant the accuracy of this information, nor do they provide any assurances regarding the Vessel's condition. Images of the Vessel may be sourced from a catalogue. This document shall not, under any circumstances, be deemed a contractual term.