



MAIN FEATURES

BUILDER	CANTIERE DELLE MARCHE	MODEL	NAUTA AIR 90
HULL NUMBER	1	TYPE	Motor Yachts
HULL TYPE	Semi-displacement	BOAT NAME	Silver Fin
YEAR	2014, major refit in 2016	HULL COLOUR	White
CONSTRUCTION MATERIAL	Aluminium	LOA	27.15 [m] - 89.1 [ft]
BEAM	6.50 [m] - 21.3 [ft]	DRAFT	1.65 [m] - 5.4 [ft]
ENGINES	2x CATERPILLAR C18 ACERT (885hp each)	CRUISING SPEED	13.5 [kn]
MAX SPEED	16 [kn]	RANGE	3900nm (at 9kn)
N° CREW CABIN	3 (sleeps 4 crew)	N° GUEST CABIN	4 (sleeps 9 guests)
DISPLACEMENT	115 [t]	N. TOILETS	5
ON DISPLAY AT/IN	Scotland, United Kingdom	FLAG	Jersey
ASKING PRICE	3,500,000 [euro]	VAT STATUS	Paid

Technical information

Engines hours	4030 (Port) / 4025 (Stbd)
Trasmissions	Shaft Drive
Propellers	NIBRAL propellers built by Radice
Main generator	2x 40 kW Kohler, Port
Main generator hours	7950
Second generator	2x 40 kW Kohler, Stbd
Second generator hours	7800
Fuel tank	24000 lt
Water tank	2130 lt
Grey water tank	1700 lt
Black water tank	980 lt
Charge batteries	Yes
Inverter	Yes

Description per area

General description

M/Y SILVER FIN is a stunning model from the incredibly successful and popular Cantiere delle Marche shipyard. This NAUTA AIR 90 is an all aluminium explorer yacht featuring elegant and airy design, huge interior spaces, long range and low fuel consumption levels allowing her owners to sail far and wide with maximum comfort. Inside, her exceedingly elegant interior has been designed by Francesco Guida, famous for her interior marine aesthetics.

M/Y SILVER FIN was the first yacht in the Cantiere delle Marche Nauta Air line, whose explorer yacht characteristics offer the perfect blend of superyacht style with the sturdy substance that characterises CdM's Explorer Yachts .

Interior and exterior spaces are kept in direct visual contact thanks to an abundant use of glass in windows and doors. The galley on the main deck was designed to be accessible both from indoors and out, with the main salon being divided into distinct conversation, relaxation and dining areas. SILVER FIN also benefits from a huge 60sq.m panoramic flybridge, with a sun area, BBQ, bar, two dining areas and an spacious al fresco lounge, specifically designed for easy outdoor living. A dedicated stairway leads from the main deck to the owner's suite ensuring total privacy, whilst a separate entrance leads to the lower deck guest cabins.

Layout

4 cabins. Full-beam Master amidships, VIP forward and 2 guest cabins with single/double sliding beds. All cabins offer en-suite bathrooms. Crew accommodates 4 in 3 cabins. Dining in the salon seats 8, whilst the flybridge dining table with forward facing seating facing and an additional collapsible table seats a further 8, in addition to the flybridge seating.

List of Equipment

ANCILLARY EQUIPMENT:

Third control station in aft cockpit
Air conditioning system (Condaria)
Sleipner bow thruster 45kw (new 2024)
Twin Sleipner stern thrusters (new 2024)
CMC Marine zero speed stabilisers
2x Watermaker 150 l/h each
2x 150lt boiler

DECK EQUIPMENT:

1x 140Kg galvanised steel anchor with 170m chain
1x 115Kg Spade type anchor with 170m chain
2x Windlasses mounted on the foredeck (MAXWELL VWC 4500)
1x 400v capstans (MAXWELL VC3000)
Opacmare crane on flybridge with maximum capacity of 800Kg

DOMESTIC EQUIPMENT:

Galley:

Miele Freezer (new 2024)

Miele Fridge: K14827SD ED/CS-1
Miele Dish Washer: G5930 Sci
Miele Oven: H5981
Miele Hob: KM 6386 (230volt 50/60hz)
Miele Hood: DA3490 Marine
Grinder "Franke" Model: WD75
Coffee maker: Nespresso
Professional ice maker: Icematic C35
Miele Microwave Oven: M 8161-2

Flybridge:

3x built in Miele fridges
Built in stainless steel BBQ

Crew area:

2x Miele washing machines
2x Miele dryers
(2 of which New in 2024)

Salon:

Wine fridge (38 bottles)

Aft cockpit:

Helm station complete with:
Screen to view cameras
Controls for bow/stern thrusters, throttles, emergency stop, rudders, etc. for mooring

Master Cabin:

Miele mini fridge 5122UI

NAVIGATION EQUIPMENT:

Simrad Autopilot with repeater on flybridge
Furuno VHF radio in wheelhouse
SSB radio in wheelhouse
Wifi throughout boat

NEW 2024:

Starlink
3x Garmin GPSMAP 9022
3x Garmin GPSMAP 9019
Garmin GMR Fantom 124-Pedestal 120W + 4 ft Antenna
Garmin Fantom dome 24X white
4x Garmin TD50 5" Touchscreen
Garmin Cortex-V1 VHF inc SmartAIS Transponder and Remote
6x Vessel Monitoring Garmin GC 200 IP Camera
Garmin MCS 10 Marine Satellite Compass
6x Power and Audio Module, GXM53 (for GC200)
USB Card Reader
3x NMEA 2000 Multiport T Connector
6x NMEA2000 Backbone/Drop Cable 0.3M
NMEA2000 Starter Kit
6x NMEA2000 Cable Right Angle
3x NMEA2000 Backbone/Drop Cable 2M
3x NMEA2000 Backbone/Drop Cable 4M
3x NMEA2000 Backbone/Drop Cable 6M
3x NMEA2000 Backbone/Drop Cable 10M
2x NMEA2000 Power Cable
3x BlueNet 20 Switch
BlueNet marine Network 500ft Bulk
10x BlueNet Marine Network Field-Inst Cable
3x BlueNet Marine Network Cable 1ft Straight
6x Marine Network Cable, small connector 2M
6x Marine Network Cable, small connector 6M

3x Marine Network Cable, small connector 12M
6x Marine Network Cable, small connector 15M, Right angle
3x Marine Network Cable, small connector 15M
Adaptor Cable (small to large)
PS7 Sonar

AUDIO/VISUAL ENTERTAINMENT SYSTEMS:

Antenna Intellian i6 TV SAT Antenna 60cm

Flybridge:

Drop down Samsung LED TV 46" with Dune HD Smart B1 Player, SAT TV receiver, Sonos connect, 8x JL Audio 8.8" waterproof speakers

External main deck:

4x JL Audio 8.8" waterproof speakers in cockpit, 1x JL Audio 10" waterproof speakers in the cockpit,
2x JL Audio 8.8" waterproof speakers in the bow area with up and down volume control

Main Salon:

Samsung LED TV 55" with SAT TV receiver, Dune HD Smart B1 player, Sonos connect, Tablet control, Air Play, B&W Speakers (No.3 200W, No.2 100W)

Owners Cabin:

Samsung LED TV 40" with SATTV receiver, Dune HD Smart B1 player, Sonos connect, Tablet control, Air Play, 5x B&W ceiling speakers (100W)

2 x VIP Cabins:

Samsung LED TV 28"
Ceiling speakers
Sonos system with QNAP device with 8 docks for disks for an overall space of 32TB

TENDER

Novurania 4.2m tender with Yamaha 70hp (4 stroke outboard engine, electric start / power trim)
Re-upholstered 2024
In built Garmin VHF and in built chart plotter

OTHER:

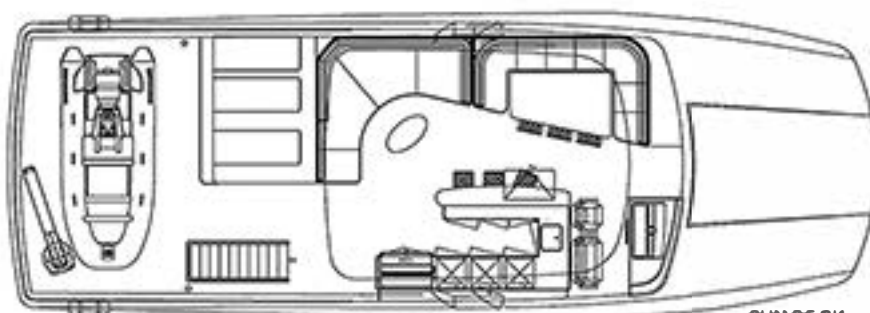
Movable swimming platform Opacmare 338350 (5x steps, works as gangway)
9x Underwater lights
Diving air compressor
Shore power converter ASEA 36kVA
FLIR Thermal and low light camera for night vision
2x 8-person liferafts (new 2024)
Sun shades and poles
Custom made windscreen cover
Custom made covers for all exterior furnishing
Internal Intercom System

Disclaimer

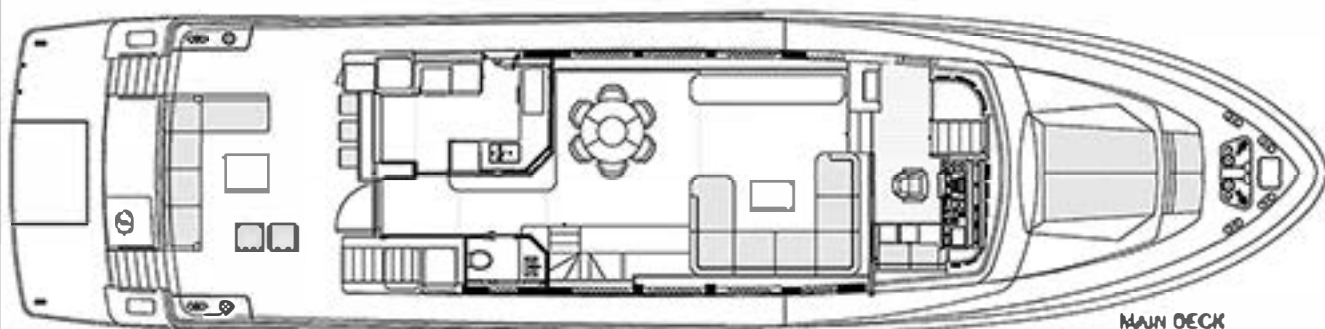
BROKERS offer the details of this vessel in good faith but cannot guarantee or warrant the accuracy of this information nor warrant the condition of the vessel. Pictures of the vessel may be taken from the catalogue. This document does not represent in any case a contractual term.



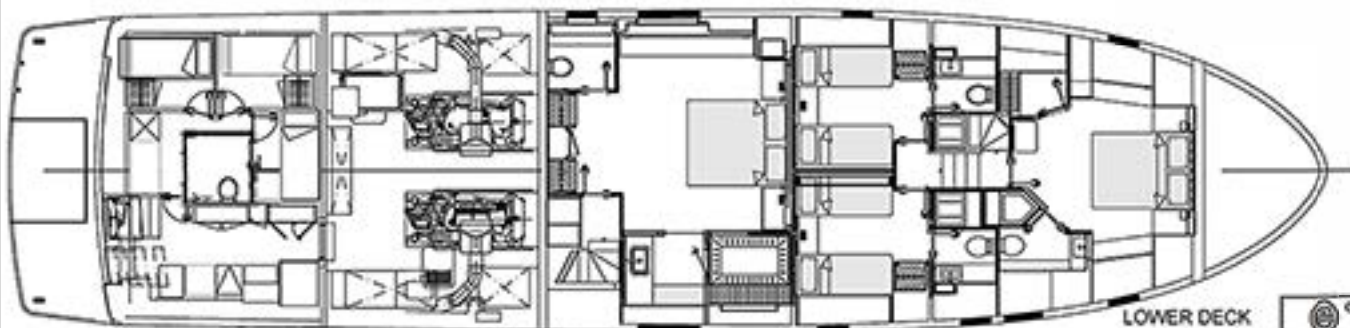
PROFILE



SUN DECK



MAIN DECK



LOWER DECK

CANTIERE DELLE MARCHE			
Sede e stabilimento: 61010 Sesto San Giovanni (AN) - Via Salaria, 100			
Tel. 071/29.00.01 - Telefax 071/29.00.02			
Telex 320533 - C.A.B. 071/29.00.03			
E-mail: info@cantieredellemarche.it			
NEW LAYOUT			
* PROGETTO E REALIZZAZIONE			