

2007 SANLORENZO SL72 – M/Y TAJIP



MAIN YACHT CHARACTERISTICS:

Boat Name:	TAJIP	Year:	2007
Builder/Make:	Sanlorenzo	Model:	SL72
Hull Number:	490	Type:	Motor Yacht
Length Overall:	69ft 2in 22m	Beam:	18ft 4in 5.61m
		Draft:	6ft 1in 1.85m
Engine Make/Model:	2x MTU 2000 V10 M92	Engine horsepower:	2x 1380hp
Propulsion Type:	Shaft Drive	Fuel Type:	Diesel
Cruising Speed:	25 knots	Max Speed:	30 knots
Engine Hours:	1512	Range:	250 nautical miles
Guest Cabins:	4	Crew Cabins:	1
Total Guests:	8	Total Crew:	2
Total Guest Toilets:	4	Crew Toilets:	1
On Display:	Valencia	Country:	Spain
Flag:	Spanish	Private/Commercial:	Private
Asking Price:	€ 975,000	Tax Status:	VAT Paid (plus 12% Spanish matriculation)

Disclaimer:

Brokers present the particulars of this Vessel in good faith; however, they cannot guarantee or warrant the accuracy of this information, nor do they provide any assurances regarding the Vessel's condition. Images of the Vessel may be sourced from a catalogue. This document shall not, under any circumstances, be deemed a contractual term.

2007 SANLORENZO SL72 – M/Y TAJIP

TECHNICAL CHARACTERISTICS:

RCD / CE Category:	A - Ocean	Classifying Body:	RINA
Main Generator:	Kohler 20kW	2nd Generator:	Kohler 20kW
Hours:	N/A	Hours:	N/A
Fuel Tank:	5000 lt 1320 gal	Water Tank:	1200 lt 317 gal
Black Tank:	400 lt 106 gal	Grey Tank:	400 lt 106 gal
Stabiliser(s):	Stabilising Trim Tabs	Bow thruster:	Yes - Hydraulic
Stern thruster:	Yes - Hydraulic	Air conditioning:	Yes

YACHT DESCRIPTION:

Architect:	Sanlorenzo In-House Team	Material:	GRP
Internal Furniture:	Natural Oak	External Hull Colour:	White

M/Y TAJIP is a 2007 Sanlorenzo SL72, a model recognised for its build quality, timeless design and practical layout. Built with a deep-V planing hull, she delivers reliable cruising performance with twin MTU engines, reaching 30 knots and cruising comfortably at 25 knots. Maintained by a professional skipper and used privately, she presents in a good overall condition with 1,512 engine hours. Her exterior spaces are well proportioned, offering multiple areas for relaxation and social use, while the interior reflects Sanlorenzo's signature style, combining warm materials and functional design. VAT and Spanish registration tax are paid, enhancing her commercial appeal.

LAYOUT:

M/Y TAJIP offers a well-balanced layout designed for comfortable cruising and guest privacy. She accommodates up to eight guests in four cabins, including an aft owner's cabin, a forward VIP and two twin guest cabins, all with en-suite bathrooms. The main deck features a bright saloon with lounge and dining areas connected directly to the cockpit, creating an easy indoor-outdoor flow. Exterior spaces include a generous aft deck for dining, a flybridge with helm and lounging areas, and a forward sunbathing zone. Separate crew accommodation for two ensures operational efficiency without compromising guest areas.

BROKER COMMENTS:

Having stepped on board TAJIP, I was impressed by her consistent maintenance under professional care and private use. A classic Sanlorenzo SL72 with comfortable spaces throughout, she benefits from VAT and Spanish registration tax paid, making her a straightforward and appealing option for European buyers, ready for immediate enjoyment.

Disclaimer:

Brokers present the particulars of this Vessel in good faith; however, they cannot guarantee or warrant the accuracy of this information, nor do they provide any assurances regarding the Vessel's condition. Images of the Vessel may be sourced from a catalogue. This document shall not, under any circumstances, be deemed a contractual term.

2007 SANLORENZO SL72 – M/Y TAJIP

SPECIFICATION:

EQUIPMENT:

General:

Planing hull (deep V-shape)
Teak decks and exterior finishes

External:

Aft cockpit dining area
Flybridge with helm station and seating
Flybridge sunbathing area
Foredeck sunpad area
Swim platform with sea access
Flybridge davit for tender or jet ski

Internal:

4 guest cabins with en-suite bathrooms
Owner's cabin aft
VIP cabin forward
2 twin guest cabins
Main saloon with lounge and dining area
Fully equipped galley
Crew cabin for 2 with bathroom

Technical:

2 × MTU 2000 10V M92 engines (1,380 HP each)
2 × Kohler generators
Hydraulic bow thruster
Hydraulic stern thruster
Trim tab stabilisation system
Idromar watermaker (180 L/h)

NAVIGATION:

3 × Raymarine chartplotters
Radar
GPS
AIS
2 × VHF radios with DSC
Raymarine rudder indicator
Raymarine tridata (speed, depth, temperature)

AUDIO VISUAL:

TV in saloon and all cabins
Interior Bose sound system
Exterior speakers (flybridge, aft deck, bow)

DOMESTIC:

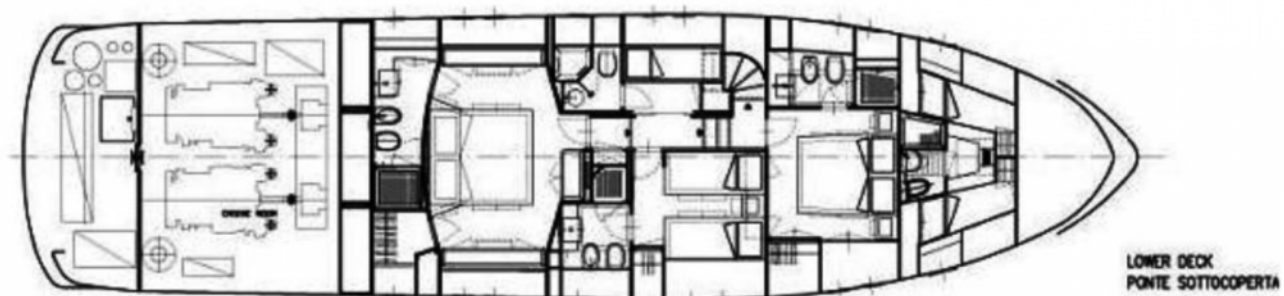
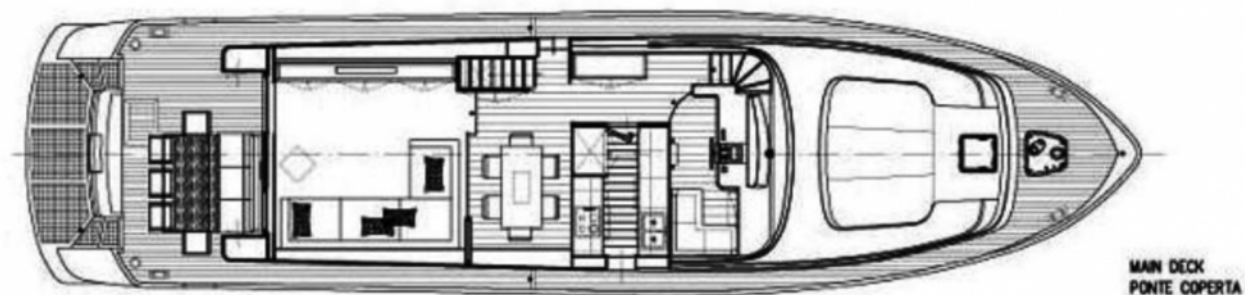
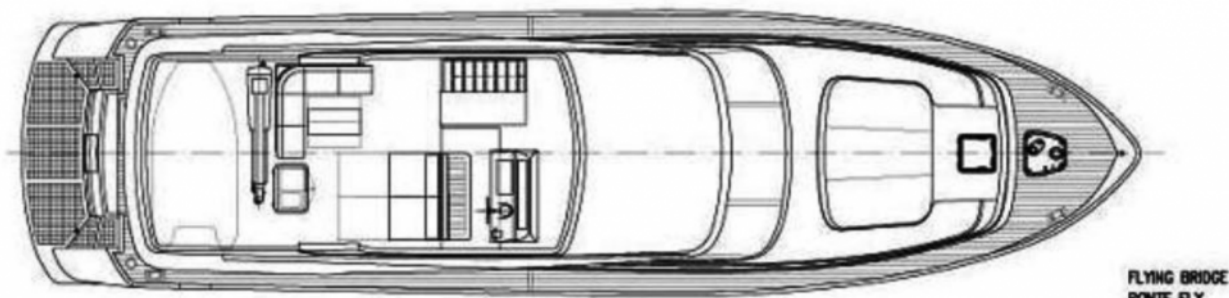
Air conditioning
Washing machine
Dryer
Dishwasher
Fridge and freezer
Oven
Microwave
Electric hob
Flybridge fridge
Flybridge BBQ

Disclaimer:

Brokers present the particulars of this Vessel in good faith; however, they cannot guarantee or warrant the accuracy of this information, nor do they provide any assurances regarding the Vessel's condition. Images of the Vessel may be sourced from a catalogue. This document shall not, under any circumstances, be deemed a contractual term.

2007 SANLORENZO SL72 – M/Y TAJIP

LAYOUT:



Disclaimer:

Brokers present the particulars of this Vessel in good faith; however, they cannot guarantee or warrant the accuracy of this information, nor do they provide any assurances regarding the Vessel's condition. Images of the Vessel may be sourced from a catalogue. This document shall not, under any circumstances, be deemed a contractual term.