



MAIN YACHT CHARACTERISTICS:

Boat Name:	SILVER BULLET	Year:	2016
Builder/Make:	Cigarette Racing Team	Model:	Marauder 50
Hull Number:	N/A	Type:	Powerboat
Length Overall:	ft 50 m 15	Beam:	ft 7.10 m 2.4
Hull Length:	ft 50 m 15	Draft:	ft 3.3 m 1
Engine:	2x Mercury Racing	Engine horsepower:	1550 hp
Make/Model:	Twin Turbo V8	Fuel Type:	Diesel
Propulsion Type:	M8 Drives	Max Speed:	100 knots
Cruising Speed:	60 knots	Range:	N/A
Engine Hours:	130	Crew Cabins:	/
Guest Cabins:	1	Total Crew:	/
Total Guests:	6-person seating	Crew Toilets:	/
Total Guest Toilets:	1	Country:	Spain
On Display:	Sotogrande	Private/Commercial:	Private
Flag:	British	Tax Status:	VAT Paid
Asking Price:	€ 990,000		

Disclaimer:

Brokers present the particulars of this Vessel in good faith; however, they cannot guarantee or warrant the accuracy of this information, nor do they provide any assurances regarding the Vessel's condition. Images of the Vessel may be sourced from a catalogue. This document shall not, under any circumstances, be deemed a contractual term.

TECHNICAL CHARACTERISTICS:

RCD / CE Category:	(B) Offshore	Classifying Body:	N/A
Fuel Tank:	lt 1200 gal 330	Water Tank:	Minimal
Air-Conditioning:	No		

YACHT DESCRIPTION:

Architect:	Cigarette Racing Team	Material:	GRP
Internal Furniture:	Cigarette Racing Team	External Hull Colour:	Cigarette Racing Team Livery

The 2016 Cigarette Racing 50 Marauder is a purpose-built offshore powerboat engineered for extreme speed, razor-sharp handling, and unmistakable presence.

Driven by twin Mercury Racing 1550 hp Twin Turbo V8 engines paired with M8 drives, she is capable of reaching breathtaking speeds approaching 100 knots.

Measuring 50 feet in length with a narrow 8-foot beam, the Marauder slices effortlessly through the water, combining race-bred aerodynamics with advanced performance engineering to deliver power with absolute control.

Bold, aggressive, and uncompromising, the 50 Marauder is more than a boat—it is a statement, where cutting-edge luxury meets pure offshore performance.

SPECIFICATION:

Engine:

2x 1550hp Twin Turbo Mercury Racing V8

Mercury Racing M8 Drives

2x Service battery & 2x Engine battery

Service and engine charger

High Flow Bilge pumps and fresh water pump

Cigarette automatic lifting engine hatchback

Disclaimer:

Brokers present the particulars of this Vessel in good faith; however, they cannot guarantee or warrant the accuracy of this information, nor do they provide any assurances regarding the Vessel's condition. Images of the Vessel may be sourced from a catalogue. This document shall not, under any circumstances, be deemed a contractual term.

SPECIFICATION (continued):

Cockpit:

2x Helm seats wit electric bolster
3x Aft passenger seats
JL Audio sound system
3x Storage lockers under aft seats
Speed gauges on the back of forward chairs
Shore power connection point

Cabin:

6x Passenger seats
Double bed
Microwave
Sink
Fridge
Large storage area
Electric stair door
Cigarette Grey Flooring

Bow:

4x pop up cleats
Openable hatch to cabin

Aft Platform:

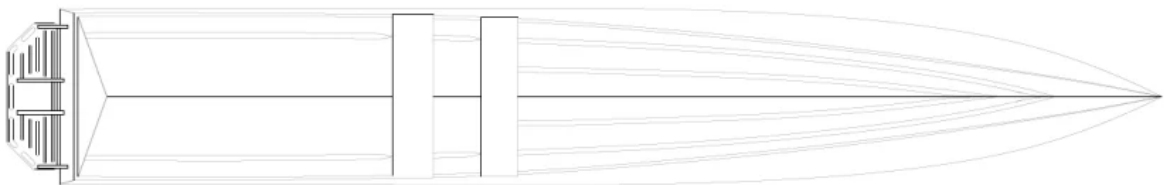
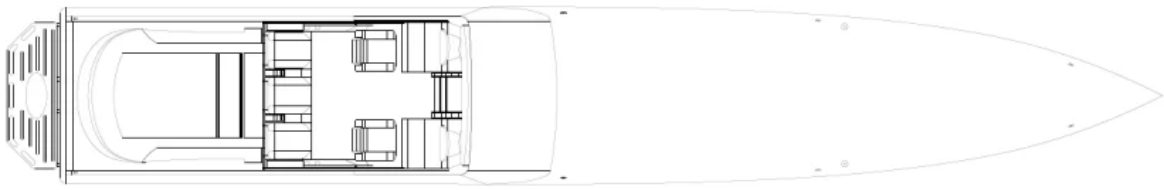
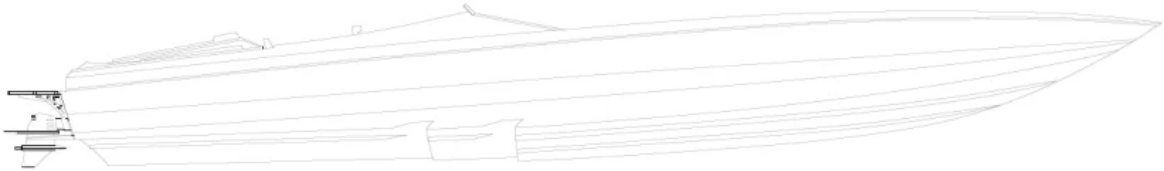
2x Pop up cleats
Aft platform with Cigarette Racing Team logo
2x Underwater lights

Twin Axle trailer with air brakes

Disclaimer:

Brokers present the particulars of this Vessel in good faith; however, they cannot guarantee or warrant the accuracy of this information, nor do they provide any assurances regarding the Vessel's condition. Images of the Vessel may be sourced from a catalogue. This document shall not, under any circumstances, be deemed a contractual term.

LAYOUT:



Disclaimer:

Brokers present the particulars of this Vessel in good faith; however, they cannot guarantee or warrant the accuracy of this information, nor do they provide any assurances regarding the Vessel's condition. Images of the Vessel may be sourced from a catalogue. This document shall not, under any circumstances, be deemed a contractual term.